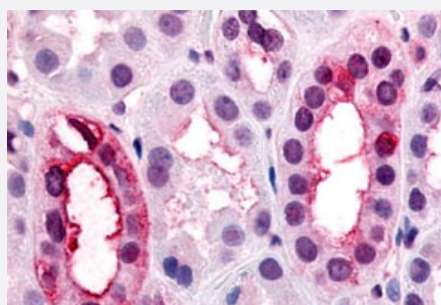


# VN1R1 polyclonal antibody

Catalog # PAB27715

Size 50 ug

## Applications



### Immunohistochemistry (Formalin/PFA-fixed paraffin-embedded sections)

Immunohistochemistry (Formalin/PFA-fixed paraffin-embedded sections) of human kidney, renal tubules with VN1R1 polyclonal antibody (Cat # PAB27715). Immunohistochemistry of formalin-fixed, paraffin-embedded tissue after heat-induced antigen retrieval.

## Specification

<b>Product Description</b>	Rabbit polyclonal antibody raised against synthetic peptide of VN1R1.
<b>Immunogen</b>	A synthetic peptide corresponding to 17 amino acid at extracellular domain of human VN1R1.
<b>Host</b>	Rabbit
<b>Reactivity</b>	Human
<b>Specificity</b>	BLAST analysis of the peptide immunogen showed no homology with other human proteins, except VN1R3 (53%).
<b>Form</b>	Liquid
<b>Purification</b>	Immunoaffinity chromatography
<b>Recommend Usage</b>	Immunohistochemistry (Formalin/PFA-fixed paraffin-embedded sections) (7-18 ug/mL) The optimal working dilution should be determined by the end user.
<b>Storage Buffer</b>	In PBS (0.09% sodium azide)
<b>Storage Instruction</b>	Store at 4°C. For long term storage store at -80°C. Aliquot to avoid repeated freezing and thawing.

**Note**

This product contains sodium azide: a POISONOUS AND HAZARDOUS SUBSTANCE which should be handled by trained staff only.

## Applications

- Immunohistochemistry (Formalin/PFA-fixed paraffin-embedded sections)

Immunohistochemistry (Formalin/PFA-fixed paraffin-embedded sections) of human kidney, renal tubules with VN1R1 polyclonal antibody (Cat # PAB27715). Immunohistochemistry of formalin-fixed, paraffin-embedded tissue after heat-induced antigen retrieval.

## Gene Info — VN1R1

**Entrez GeneID** [57191](#)

**Protein Accession#** [Q9GZP7](#)

**Gene Name** VN1R1

**Gene Alias** V1RL1, VNR19I1, ZVNH1, ZVNR1

**Gene Description** vomeronasal 1 receptor 1

**Omim ID** [605234](#)

**Gene Ontology** [Hyperlink](#)

**Gene Summary** Pheromones are chemical signals that elicit specific behavioral responses and physiologic alterations in recipients of the same species. The protein encoded by this gene is similar to pheromone receptors and is primarily localized to the olfactory mucosa. An alternate splice variant of this gene is thought to exist, but its full length nature has not been determined. [provided by RefSeq]

**Other Designations** V1R-like 1|V3R-related|vomeronasal olfactory receptor, (chromosome 19) subtype I, member 1

## Disease

- [Tobacco Use Disorder](#)