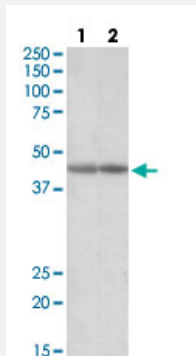


CKM polyclonal antibody

Catalog # PAB27681 Size 100 ug

Applications



Western Blot (Tissue lysate)

CKM polyclonal antibody (Cat # PAB27681) (0.03ug/ml) staining of Lane 1: human and Lane 2: mouse heart lysates (35ug protein in RIPA buffer). Primary incubation was 1 hour. Detected by chemiluminescence.

Specification

Product Description	Goat polyclonal antibody raised against synthetic peptide of CKM.
Immunogen	A synthetic peptide corresponding to amino acids 258-270 at internal region of human CKM.
Sequence	QKIEEIFKKAGHP
Host	Goat
Theoretical MW (kDa)	45
Reactivity	Chicken, Dog, Human, Mouse, Pig, Rat
Purification	Antigen affinity purification
Concentration	0.5 mg/mL
Recommend Usage	ELISA (1:8000) Western Blot (0.03-0.1ug/ml) The optimal working dilution should be determined by the end user.
Storage Buffer	In Tris saline, pH 7.3 (0.02% sodium azide, 0.5% BSA)

Storage Instruction

Store at -20°C.
Aliquot to avoid repeated freezing and thawing.

Note

This product contains sodium azide: a POISONOUS AND HAZARDOUS SUBSTANCE which should be handled by trained staff only.

Applications

- Western Blot (Tissue lysate)

CKM polyclonal antibody (Cat # PAB27681) (0.03ug/ml) staining of Lane 1: human and Lane 2: mouse heart lysates (35ug protein in RIPA buffer). Primary incubation was 1 hour. Detected by chemiluminescence.

Gene Info — CKM

Entrez GeneID [1158](#)

Protein Accession# [NP_001815.2](#)

Gene Name CKM

Gene Alias CKMM, M-CK

Gene Description creatine kinase, muscle

Omim ID [123310](#)

Gene Ontology [Hyperlink](#)

Gene Summary The protein encoded by this gene is a cytoplasmic enzyme involved in energy homeostasis and is an important serum marker for myocardial infarction. The encoded protein reversibly catalyzes the transfer of phosphate between ATP and various phosphogens such as creatine phosphate. It acts as a homodimer in striated muscle as well as in other tissues, and as a heterodimer with a similar brain isozyme in heart. The encoded protein is a member of the ATP:guanido phosphotransferase protein family. [provided by RefSeq]

Other Designations creatine kinase M chain|creatine kinase-M|muscle creatine kinase

Pathway

- [Arginine and proline metabolism](#)
- [Metabolic pathways](#)

Disease

- [Body Weight](#)
- [Cardiovascular Diseases](#)
- [Cleft Lip](#)
- [Cleft Palate](#)
- [Coronary Artery Disease](#)
- [Diabetes Mellitus](#)
- [Edema](#)
- [Genetic Predisposition to Disease](#)
- [Task Performance and Analysis](#)