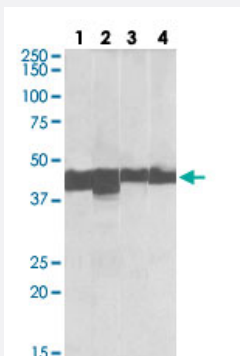


# CKM polyclonal antibody

Catalog # PAB27680      Size 100 ug

## Applications



### Western Blot (Tissue lysate)

CKM polyclonal antibody (Cat # PAB27680) (0.01ug/ml) staining of Lane 1: human skeletal muscle, Lane 2: mouse skeletal muscle, Lane 3: human heart, Lane 4: mouse heart lysates (35ug protein in RIPA buffer). Primary incubation was 1 hour. Detected by chemiluminescence.

## Specification

**Product Description** Goat polyclonal antibody raised against synthetic peptide of CKM.

**Immunogen** A synthetic peptide corresponding to N-terminus of human CKM.

**Sequence** NTHNKFKLNYKPEE

**Host** Goat

**Theoretical MW (kDa)** 45

**Reactivity** Dog, Human, Mouse

**Purification** Antigen affinity purification

**Concentration** 0.5 mg/mL

**Recommend Usage**  
ELISA (1:128000)  
Western Blot (0.01-0.03ug/ml)  
The optimal working dilution should be determined by the end user.

**Storage Buffer** In Tris saline, pH 7.3 (0.02% sodium azide, 0.5% BSA)

**Storage Instruction**

Store at -20°C.  
Aliquot to avoid repeated freezing and thawing.

**Note**

This product contains sodium azide: a POISONOUS AND HAZARDOUS SUBSTANCE which should be handled by trained staff only.

## Applications

- Western Blot (Tissue lysate)

CKM polyclonal antibody (Cat # PAB27680) (0.01ug/ml) staining of Lane 1: human skeletal muscle, Lane 2: mouse skeletal muscle, Lane 3: human heart, Lane 4: mouse heart lysates (35ug protein in RIPA buffer). Primary incubation was 1 hour. Detected by chemiluminescence.

## Gene Info — CKM

**Entrez GeneID** [1158](#)

**Protein Accession#** [NP\\_001815.2](#)

**Gene Name** CKM

**Gene Alias** CKMM, M-CK

**Gene Description** creatine kinase, muscle

**Omim ID** [123310](#)

**Gene Ontology** [Hyperlink](#)

**Gene Summary** The protein encoded by this gene is a cytoplasmic enzyme involved in energy homeostasis and is an important serum marker for myocardial infarction. The encoded protein reversibly catalyzes the transfer of phosphate between ATP and various phosphogens such as creatine phosphate. It acts as a homodimer in striated muscle as well as in other tissues, and as a heterodimer with a similar brain isozyme in heart. The encoded protein is a member of the ATP:guanido phosphotransferase protein family. [provided by RefSeq]

**Other Designations** creatine kinase M chain|creatine kinase-M|muscle creatine kinase

## Pathway

- [Arginine and proline metabolism](#)
- [Metabolic pathways](#)

## Disease

- [Body Weight](#)
- [Cardiovascular Diseases](#)
- [Cleft Lip](#)
- [Cleft Palate](#)
- [Coronary Artery Disease](#)
- [Diabetes Mellitus](#)
- [Edema](#)
- [Genetic Predisposition to Disease](#)
- [Task Performance and Analysis](#)