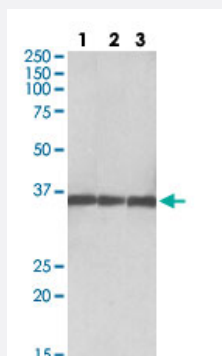


MDH1 polyclonal antibody

Catalog # PAB27679 Size 100 ug

Applications



Western Blot (Tissue lysate)

MDH1 polyclonal antibody (Cat # PAB27679) (0.03ug/ml) staining of Lane 1: human, Lane 2: mouse and Lane 3: rat lysates (35ug protein in RIPA buffer). Primary incubation was 1 hour. Detected by chemiluminescence.

Specification

Product Description	Goat polyclonal antibody raised against synthetic peptide of MDH1.
Immunogen	A synthetic peptide corresponding to amino acids 211-223 at internal region of human MDH1.
Sequence	PDVNHAKVKLQGK
Host	Goat
Theoretical MW (kDa)	35
Reactivity	Chicken, Human, Mouse, Rat
Purification	Antigen affinity purification
Concentration	0.5 mg/mL
Recommend Usage	ELISA (1:16000) Western Blot (0.03-0.1ug/ml) The optimal working dilution should be determined by the end user.
Storage Buffer	In Tris saline, pH 7.3 (0.02% sodium azide, 0.5% BSA)

Storage Instruction

Store at -20°C.
Aliquot to avoid repeated freezing and thawing.

Note

This product contains sodium azide: a POISONOUS AND HAZARDOUS SUBSTANCE which should be handled by trained staff only.

Applications

- Western Blot (Tissue lysate)

MDH1 polyclonal antibody (Cat # PAB27679) (0.03ug/ml) staining of Lane 1: human, Lane 2: mouse and Lane 3: rat lysates (35ug protein in RIPA buffer). Primary incubation was 1 hour. Detected by chemiluminescence.

Gene Info — MDH1

Entrez GeneID[4190](#)**Protein Accession#**[NP_001186040.1;NP_005908.1;NP_001186041.1](#)**Gene Name**

MDH1

Gene Alias

MDH-s, MDHA, MGC:1375, MOR2

Gene Description

malate dehydrogenase 1, NAD (soluble)

Omim ID[154200](#)**Gene Ontology**[Hyperlink](#)**Gene Summary**

Malate dehydrogenase catalyzes the reversible oxidation of malate to oxaloacetate, utilizing the NAD/NADH cofactor system in the citric acid cycle. The protein encoded by this gene is localized to the cytoplasm and may play pivotal roles in the malate-aspartate shuttle that operates in the metabolic coordination between cytosol and mitochondria. [provided by RefSeq]

Other Designations

cytosolic malate dehydrogenase|soluble malate dehydrogenase

Pathway

- [Biosynthesis of alkaloids derived from histidine and purine](#)
- [Biosynthesis of alkaloids derived from ornithine](#)
- [Biosynthesis of alkaloids derived from shikimate pathway](#)
- [Biosynthesis of alkaloids derived from terpenoid and polyketide](#)

- [Biosynthesis of phenylpropanoids](#)
- [Biosynthesis of plant hormones](#)
- [Biosynthesis of terpenoids and steroids](#)
- [Carbon fixation in photosynthetic organisms](#)
- [Citrate cycle \(TCA cycle\)](#)
- [Glyoxylate and dicarboxylate metabolism](#)
- [Metabolic pathways](#)
- [Pyruvate metabolism](#)
- [Reductive carboxylate cycle \(CO₂ fixation\)](#)

Disease

- [Drug Toxicity](#)
- [Edema](#)
- [Hypercholesterolemia](#)