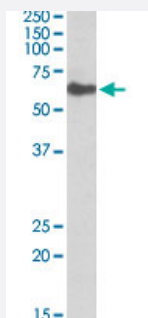


GGT1 polyclonal antibody

Catalog # PAB27678

Size 100 ug

Applications



Western Blot (Tissue lysate)

GGT1 polyclonal antibody (Cat # PAB27678) (0.1ug/ml) staining of human kidney lysate (35ug protein in RIPA buffer). Primary incubation was 1 hour. Detected by chemiluminescence.

Specification

Product Description	Goat polyclonal antibody raised against synthetic peptide of GGT1.
Immunogen	A synthetic peptide corresponding to amino acids 180-193 at internal region of human GGT1.
Sequence	NKRTVIEQQPVLCE
Host	Goat
Theoretical MW (kDa)	60
Reactivity	Human
Purification	Antigen affinity purification
Concentration	0.5 mg/mL
Recommend Usage	ELISA (1:128000) Western Blot (0.1-0.3ug/ml) The optimal working dilution should be determined by the end user.
Storage Buffer	In Tris saline, pH 7.3 (0.02% sodium azide, 0.5% BSA)

Storage Instruction

Store at -20°C.
Aliquot to avoid repeated freezing and thawing.

Note

This product contains sodium azide: a POISONOUS AND HAZARDOUS SUBSTANCE which should be handled by trained staff only.

Applications

- Western Blot (Tissue lysate)

GGT1 polyclonal antibody (Cat # PAB27678) (0.1ug/ml) staining of human kidney lysate (35ug protein in RIPA buffer). Primary incubation was 1 hour. Detected by chemiluminescence.

Gene Info — GGT1

Entrez GeneID[2678](#)**Protein Accession#**[NP_005256.2](#)**Gene Name**

GGT1

Gene Alias

CD224, D22S672, D22S732, GGT, GTG, MGC96892, MGC96904, MGC96963

Gene Description

gamma-glutamyltransferase 1

Omim ID[231950](#)**Gene Ontology**[Hyperlink](#)**Gene Summary**

The enzyme encoded by this gene catalyzes the transfer of the glutamyl moiety of glutathione to a variety of amino acids and dipeptide acceptors. The enzyme is composed of a heavy chain and a light chain, which are derived from a single precursor protein, and is present in tissues involved in absorption and secretion. This enzyme is a member of the gamma-glutamyltransferase protein family, of which many members have not yet been fully characterized and some of which may represent pseudogenes. This gene is classified as type I gamma-glutamyltransferase. Multiple alternatively spliced variants, encoding the same protein, have been identified. [provided by RefSeq]

Other Designations

OTTHUMP00000028921|OTTHUMP00000159078|gamma-glutamyl transpeptidase|glutamyl transpeptidase

Pathway

- [Arachidonic acid metabolism](#)
- [Cyanoamino acid metabolism](#)

- [Glutathione metabolism](#)
- [Metabolic pathways](#)
- [Selenoamino acid metabolism](#)
- [Taurine and hypotaurine metabolism](#)

Disease

- [Alzheimer disease](#)
- [Arsenic Poisoning](#)
- [Cognition](#)
- [Disease Progression](#)
- [DNA Damage](#)
- [Fatty Liver](#)
- [Genetic Predisposition to Disease](#)
- [Metabolic Syndrome X](#)
- [Pancreatic Neoplasms](#)
- [Sleep Apnea](#)