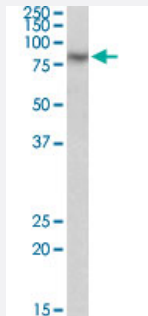


CAPN1 polyclonal antibody

Catalog # PAB27675 Size 100 ug

Applications



Western Blot (Tissue lysate)

CAPN1 polyclonal antibody (Cat # PAB27675) (0.3ug/ml) staining of human kidney lysate (35ug protein in RIPA buffer). Primary incubation was 1 hour. Detected by chemiluminescence.

Specification

Product Description	Goat polyclonal antibody raised against synthetic peptide of CAPN1.
Immunogen	A synthetic peptide corresponding to amino acids 468-481 at internal region of human CAPN1.
Sequence	NASRARSEQFINLR
Host	Goat
Theoretical MW (kDa)	80
Reactivity	Chicken, Human, Pig
Purification	Antigen affinity purification
Concentration	0.5 mg/mL
Recommend Usage	ELISA (1:128000) Western Blot (0.3-1 ug/ml) The optimal working dilution should be determined by the end user.
Storage Buffer	In Tris saline, pH 7.3 (0.02% sodium azide, 0.5% BSA)

Storage Instruction

Store at -20°C.
Aliquot to avoid repeated freezing and thawing.

Note

This product contains sodium azide: a POISONOUS AND HAZARDOUS SUBSTANCE which should be handled by trained staff only.

Applications

- Western Blot (Tissue lysate)

CAPN1 polyclonal antibody (Cat # PAB27675) (0.3ug/ml) staining of human kidney lysate (35ug protein in RIPA buffer). Primary incubation was 1 hour. Detected by chemiluminescence.

Gene Info — CAPN1

Entrez GeneID
[823](#)
Protein Accession#
[NP_005177.2](#)
Gene Name

CAPN1

Gene Alias

CANP, CANP1, CANPL1, muCANP, muCL

Gene Description

calpain 1, (mu/l) large subunit

Omim ID
[114220](#)
Gene Ontology
[Hyperlink](#)
Gene Summary

The calpains, calcium-activated neutral proteases, are nonlysosomal, intracellular cysteine proteases. The mammalian calpains include ubiquitous, stomach-specific, and muscle-specific proteins. The ubiquitous enzymes consist of heterodimers with distinct large, catalytic subunits associated with a common small, regulatory subunit. This gene encodes the large subunit of the ubiquitous enzyme, calpain 1. [provided by RefSeq]

Other Designations

calcium-activated neutral proteinase|calpain 1, large subunit|calpain, large polypeptide L1|cell proliferation-inducing protein 30

Pathway

- [Apoptosis](#)