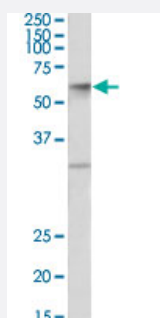


SLC17A5 polyclonal antibody

Catalog # PAB27673 Size 100 ug

Applications



Western Blot (Tissue lysate)

SLC17A5 polyclonal antibody (Cat # PAB27673) (1ug/ml) staining of human placenta lysate (35ug protein in RIPA buffer). Primary incubation was 1 hour. Detected by chemiluminescence.

Specification

Product Description	Goat polyclonal antibody raised against synthetic peptide of SLC17A5.
Immunogen	A synthetic peptide corresponding to amino acids 85-99 at internal region of human SLC17A5.
Sequence	EHSAPIKVHHNQTKG
Host	Goat
Theoretical MW (kDa)	55-60
Reactivity	Human
Purification	Antigen affinity purification
Concentration	0.5 mg/mL
Recommend Usage	ELISA (1:128000) Western Blot (1-3ug/ml) The optimal working dilution should be determined by the end user.
Storage Buffer	In Tris saline, pH 7.3 (0.02% sodium azide, 0.5% BSA)

Storage Instruction

Store at -20°C.
Aliquot to avoid repeated freezing and thawing.

Note

This product contains sodium azide: a POISONOUS AND HAZARDOUS SUBSTANCE which should be handled by trained staff only.

Applications

- Western Blot (Tissue lysate)

SLC17A5 polyclonal antibody (Cat # PAB27673) (1ug/ml) staining of human placenta lysate (35ug protein in RIPA buffer).
Primary incubation was 1 hour. Detected by chemiluminescence.

Gene Info — SLC17A5

Entrez GeneID [26503](#)

Protein Accession# [NP_036566.1](#)

Gene Name SLC17A5

Gene Alias AST, FLJ22227, FLJ23268, ISSD, NSD, SD, SIALIN, SIASD, SLD

Gene Description solute carrier family 17 (anion/sugar transporter), member 5

Omim ID [269920](#) [604322](#) [604369](#)

Gene Ontology [Hyperlink](#)

Gene Summary This gene encodes a membrane transporter that exports free sialic acids that have been cleaved off of cell surface lipids and proteins from lysosomes. Mutations in this gene cause sialic acid storage diseases, including infantile sialic acid storage disorder and Salla disease, an adult form. [provided by RefSeq]

Other Designations OTTHUMP00000016747|OTTHUMP00000039323|membrane glycoprotein HP59|sialic acid storage disease|sialin|solute carrier family 17, member 5

Pathway

- [Lysosome](#)

Disease

- [Cardiovascular Diseases](#)
- [Diabetes Mellitus](#)
- [Edema](#)
- [Tobacco Use Disorder](#)