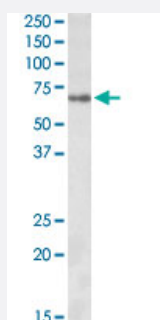


# Zfp157 polyclonal antibody

Catalog # PAB27671      Size 100 ug

## Applications



### Western Blot (Tissue lysate)

Zfp157 polyclonal antibody (Cat # PAB27671) (1ug/ml) staining of mouse spinal cord lysate (35ug protein in RIPA buffer). Primary incubation was 1 hour. Detected by chemiluminescence.

## Specification

<b>Product Description</b>	Goat polyclonal antibody raised against synthetic peptide of Zfp157.
<b>Immunogen</b>	A synthetic peptide corresponding to internal region of mouse Zfp157.
<b>Sequence</b>	QCSKQHAYPSVKP
<b>Host</b>	Goat
<b>Theoretical MW (kDa)</b>	65
<b>Reactivity</b>	Mouse
<b>Purification</b>	Antigen affinity purification
<b>Concentration</b>	0.5 mg/mL
<b>Recommend Usage</b>	ELISA (1:32000) Western Blot (1-3ug/ml) The optimal working dilution should be determined by the end user.
<b>Storage Buffer</b>	In Tris saline, pH 7.3 (0.02% sodium azide, 0.5% BSA)

**Storage Instruction**

Store at -20°C.  
Aliquot to avoid repeated freezing and thawing.

**Note**

This product contains sodium azide: a POISONOUS AND HAZARDOUS SUBSTANCE which should be handled by trained staff only.

## Applications

- Western Blot (Tissue lysate)

Zfp157 polyclonal antibody (Cat # PAB27671) (1ug/ml) staining of mouse spinal cord lysate (35ug protein in RIPA buffer).  
Primary incubation was 1 hour. Detected by chemiluminescence.

## Gene Info — Zfp157

**Entrez GeneID**[72154](#)**Protein Accession#**[NP\\_082406.2](#)**Gene Name**

Zfp157

**Gene Alias**

2610020C11Rik, A630094N24Rik, A1327407, mszf12, mszf23-1

**Gene Description**

zinc finger protein 157

**Gene Ontology**[Hyperlink](#)**Other Designations**

OTTMUSP00000026164