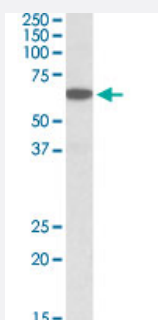


PLA2G4C polyclonal antibody

Catalog # PAB27669 Size 100 ug

Applications



Western Blot (Tissue lysate)

PLA2G4C polyclonal antibody (Cat # PAB27669) (0.03ug/ml) staining of human pancreas lysate (35ug protein in RIPA buffer). Primary incubation was 1 hour. Detected by chemiluminescence.

Specification

Product Description	Goat polyclonal antibody raised against synthetic peptide of PLA2G4C.
Immunogen	A synthetic peptide corresponding to internal region of human PLA2G4C.
Sequence	NTEVIREYIFDQLR
Host	Goat
Theoretical MW (kDa)	65
Reactivity	Human
Purification	Antigen affinity purification
Concentration	0.5 mg/mL
Recommend Usage	ELISA (1:128000) Western Blot (0.03-0.1ug/ml) The optimal working dilution should be determined by the end user.
Storage Buffer	In Tris saline, pH 7.3 (0.02% sodium azide, 0.5% BSA)

Storage Instruction

Store at -20°C.
Aliquot to avoid repeated freezing and thawing.

Note

This product contains sodium azide: a POISONOUS AND HAZARDOUS SUBSTANCE which should be handled by trained staff only.

Applications

- Western Blot (Tissue lysate)

PLA2G4C. polyclonal antibody (Cat # PAB27669) (0.03ug/ml) staining of human pancreas lysate (35ug protein in RIPA buffer). Primary incubation was 1 hour. Detected by chemiluminescence.

Gene Info — PLA2G4C

Entrez GeneID[8605](#)**Protein Accession#**[NP_003697.2;NP_001152794.1;NP_001152795.1](#)**Gene Name**

PLA2G4C

Gene Alias

CPLA2-gamma, DKFZp586C0423

Gene Description

phospholipase A2, group IVC (cytosolic, calcium-independent)

Omim ID[603602](#)**Gene Ontology**[Hyperlink](#)**Gene Summary**

This gene encodes a protein which is a member of the phospholipase A2 enzyme family which hydrolyzes glycerophospholipids to produce free fatty acids and lysophospholipids, both of which serve as precursors in the production of signaling molecules. The encoded protein has been shown to be a calcium-independent and membrane bound enzyme. Multiple transcript variants encoding different isoforms have been found for this gene. [provided by RefSeq]

Other Designations

cytosolic phospholipase A2 gamma|phospholipase A2, cytosolic, calcium-independent, gamma|phospholipase A2, group IVC

Disease

- [Cardiovascular Diseases](#)
- [Diabetes Mellitus](#)
- [Edema](#)

- [Genetic Predisposition to Disease](#)
- [HIV Infections](#)
- [Schizophrenia](#)