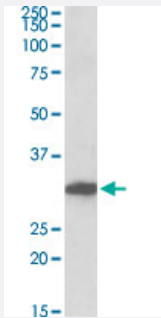


POU6F1 polyclonal antibody

Catalog # PAB27666 Size 100 ug

Applications



Western Blot (Tissue lysate)

POU6F1 polyclonal antibody (Cat # PAB27666) (0.3ug/ml) staining of human cerebral cortex lysate (35ug protein in RIPA buffer). Primary incubation was 1 hour. Detected by chemiluminescence.

Specification

Product Description	Goat polyclonal antibody raised against synthetic peptide of POU6F1.
Immunogen	A synthetic peptide corresponding to internal region of human POU6F1.
Sequence	ETPTVSQLVSKPHTP
Host	Goat
Theoretical MW (kDa)	30
Reactivity	Chicken, Dog, Human, Mouse, Rat
Purification	Antigen affinity purification
Concentration	0.5 mg/mL
Recommend Usage	ELISA (1:128000) Western Blot (0.3-1 ug/ml) The optimal working dilution should be determined by the end user.
Storage Buffer	In Tris saline, pH 7.3 (0.02% sodium azide, 0.5% BSA)

Storage Instruction

Store at -20°C.
Aliquot to avoid repeated freezing and thawing.

Note

This product contains sodium azide: a POISONOUS AND HAZARDOUS SUBSTANCE which should be handled by trained staff only.

Applications

- Western Blot (Tissue lysate)

POU6F1 polyclonal antibody (Cat # PAB27666) (0.3ug/ml) staining of human cerebral cortex lysate (35ug protein in RIPA buffer). Primary incubation was 1 hour. Detected by chemiluminescence.

Gene Info — POU6F1

Entrez GeneID[5463](#)**Protein Accession#**[NP_002693.3](#)**Gene Name**

POU6F1

Gene Alias

BRN5, MPOU, TCFB1

Gene Description

POU class 6 homeobox 1

Gene Ontology[Hyperlink](#)**Gene Summary**

class 6

Other Designations

POU domain, class 6, transcription factor 1