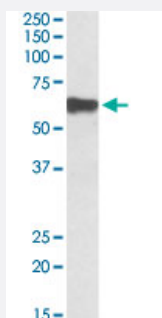


# MYOT polyclonal antibody

Catalog # PAB27663      Size 100 ug

## Applications



### Western Blot (Tissue lysate)

MYOT polyclonal antibody (Cat # PAB27663) (0.1ug/ml) staining of human skeletal muscle lysate (35ug protein in RIPA buffer). Primary incubation was 1 hour. Detected by chemiluminescence.

## Specification

<b>Product Description</b>	Goat polyclonal antibody raised against synthetic peptide of MYOT.
<b>Immunogen</b>	A synthetic peptide corresponding to amino acids 209-221 at internal region of human MYOT.
<b>Sequence</b>	DSQQHNSEHARLQ
<b>Host</b>	Goat
<b>Theoretical MW (kDa)</b>	60
<b>Reactivity</b>	Human
<b>Purification</b>	Antigen affinity purification
<b>Concentration</b>	0.5 mg/mL
<b>Recommend Usage</b>	ELISA (1:128000) Western Blot (0.1-0.3ug/ml) The optimal working dilution should be determined by the end user.
<b>Storage Buffer</b>	In Tris saline, pH 7.3 (0.02% sodium azide, 0.5% BSA)

**Storage Instruction**

Store at -20°C.  
Aliquot to avoid repeated freezing and thawing.

**Note**

This product contains sodium azide: a POISONOUS AND HAZARDOUS SUBSTANCE which should be handled by trained staff only.

## Applications

- Western Blot (Tissue lysate)

MYOT polyclonal antibody (Cat # PAB27663) (0.1 ug/ml) staining of human skeletal muscle lysate (35ug protein in RIPA buffer). Primary incubation was 1 hour. Detected by chemiluminescence.

## Gene Info — MYOT

**Entrez GeneID**[9499](#)**Protein Accession#**[NP\\_006781.1;NP\\_001129412.1](#)**Gene Name**

MYOT

**Gene Alias**

LGMD1, LGMD1A, TTID

**Gene Description**

myotilin

**Omim ID**[159000](#) [182920](#) [604103](#) [609200](#)**Gene Ontology**[Hyperlink](#)**Gene Summary**

This gene encodes a cytoskeletal protein which plays a significant role in the stability of thin filaments during muscle contraction. This protein binds F-actin, crosslinks actin filaments, and prevents latrunculin A-induced filament disassembly. Mutations in this gene have been associated with limb-girdle muscular dystrophy and myofibrillar myopathies. Several alternatively spliced transcript variants of this gene have been described, but the full-length nature of some of these variants has not been determined

**Other Designations**

titin immunoglobulin domain protein (myotilin)

## Disease

- [Cardiovascular Diseases](#)
- [Diabetes Mellitus](#)
- [Edema](#)