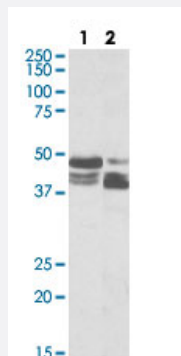


PLIN3 polyclonal antibody

Catalog # PAB27662 Size 100 ug

Applications



Western Blot

PLIN3 polyclonal antibody (Cat # PAB27662) (0.03ug/ml) staining of Lane 1: HeLa and Lane 2: human colon cancer lysate (35ug protein in RIPA buffer). Primary incubation was 1 hour. Detected by chemiluminescence.

Specification

Product Description	Goat polyclonal antibody raised against synthetic peptide of PLIN3.
Immunogen	A synthetic peptide corresponding to amino acids 154-167 at internal region of human PLIN3.
Sequence	TRGAVQSGVDKTKS
Host	Goat
Theoretical MW (kDa)	48
Reactivity	Human
Purification	Antigen affinity purification
Concentration	0.5 mg/mL
Recommend Usage	ELISA (1:128000) Western Blot (0.03-0.1ug/ml) The optimal working dilution should be determined by the end user.
Storage Buffer	In Tris saline, pH 7.3 (0.02% sodium azide, 0.5% BSA)

Storage Instruction

Store at -20°C.
Aliquot to avoid repeated freezing and thawing.

Note

This product contains sodium azide: a POISONOUS AND HAZARDOUS SUBSTANCE which should be handled by trained staff only.

Applications

- Western Blot

PLIN3 polyclonal antibody (Cat # PAB27662) (0.03ug/ml) staining of Lane 1: HeLa and Lane 2: human colon cancer lysate (35ug protein in RIPA buffer). Primary incubation was 1 hour. Detected by chemiluminescence.

Gene Info — PLIN3

Entrez GeneID[10226](#)**Protein Accession#**[NP_005808.3;NP_001157661.1;NP_001157666.1](#)**Gene Name**

PLIN3

Gene Alias

MGC11117, MGC2012, PP17, TIP47, M6PRBP1

Gene Description

mannose-6-phosphate receptor binding protein 1

Omim ID[602702](#)**Gene Ontology**[Hyperlink](#)**Gene Summary**

Mannose 6-phosphate receptors (MPRs) deliver lysosomal hydrolase from the Golgi to endosomes and then return to the Golgi complex. The protein encoded by this gene interacts with the cytoplasmic domains of both cation-independent and cation-dependent MPRs, and is required for endosome-to-Golgi transport. This protein also binds directly to the GTPase RAB9 (RAB9A), a member of the RAS oncogene family. The interaction with RAB9 has been shown to increase the affinity of this protein for its cargo. Multiple transcript variants encoding different isoforms have been found for this gene

Other Designations

MPR-BINDING PROTEIN, 47-KD|MPR-binding protein 47 kDa|cargo selection protein (mannose 6 phosphate receptor binding protein)|cargo selection protein TIP47|mannose 6 phosphate receptor binding protein 1|placental protein 17|tail-interacting protein, 47 kD