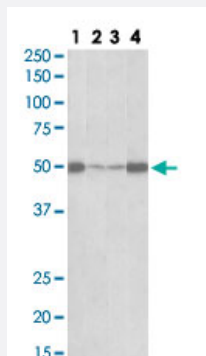


EEF1A2 polyclonal antibody

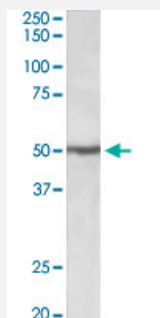
Catalog # PAB27657 Size 100 ug

Applications



Western Blot (Tissue lysate)

EEF1A2 polyclonal antibody (Cat # PAB27657) (0.5ug/ml) staining of Lane 1: mouse skeletal muscle, Lane 2: rat skeletal muscle, Lane 3: mouse heart and Lane 4: rat heart lysates (35ug protein in RIPA buffer). Primary incubation was 1 hour. Detected by chemiluminescence.



Western Blot (Cell lysate)

EEF1A2 polyclonal antibody (Cat # PAB27657) (0.5ug/ml) staining of Jurkat lysate (35ug protein in RIPA buffer). Primary incubation was 1 hour. Detected by chemiluminescence.

Specification

Product Description	Goat polyclonal antibody raised against synthetic peptide of EEF1A2.
Immunogen	A synthetic peptide corresponding to internal region of human EEF1A2.
Sequence	NPATVPFVPIS
Host	Goat
Theoretical MW (kDa)	50
Reactivity	Chicken, Dog, Human, Mouse, Rat

Purification	Antigen affinity purification
Concentration	0.5 mg/mL
Recommend Usage	ELISA (1:8000) Western Blot (0.5-2ug/ml) The optimal working dilution should be determined by the end user.
Storage Buffer	In Tris saline, pH 7.3 (0.02% sodium azide, 0.5% BSA)
Storage Instruction	Store at -20°C. Aliquot to avoid repeated freezing and thawing.
Note	This product contains sodium azide: a POISONOUS AND HAZARDOUS SUBSTANCE which should be handled by trained staff only.

Applications

- Western Blot (Tissue lysate)

EEF1A2 polyclonal antibody (Cat # PAB27657) (0.5ug/ml) staining of Lane 1: mouse skeletal muscle, Lane 2: rat skeletal muscle, Lane 3: mouse heart and Lane 4: rat heart lysates (35ug protein in RIPA buffer). Primary incubation was 1 hour. Detected by chemiluminescence.

- Western Blot (Cell lysate)

EEF1A2 polyclonal antibody (Cat # PAB27657) (0.5ug/ml) staining of Jurkat lysate (35ug protein in RIPA buffer). Primary incubation was 1 hour. Detected by chemiluminescence.

Gene Info — EEF1A2

Entrez GeneID	1917
Protein Accession#	NP_001949.1
Gene Name	EEF1A2
Gene Alias	EEF1AL, EF-1-alpha-2, EF1A, FLJ41696, HS1, STN, STNL
Gene Description	eukaryotic translation elongation factor 1 alpha 2
Omim ID	602959
Gene Ontology	Hyperlink

Gene Summary

This gene encodes an isoform of the alpha subunit of the elongation factor-1 complex, which is responsible for the enzymatic delivery of aminoacyl tRNAs to the ribosome. This isoform (alpha 2) is expressed in brain, heart and skeletal muscle, and the other isoform (alpha 1) is expressed in brain, placenta, lung, liver, kidney, and pancreas. This gene may be critical in the development of ovarian cancer. Alternatively spliced transcript variants encoding different isoforms have been found for this gene. [provided by RefSeq]

Other Designations

OTTHUMP00000031776|elongation factor 1-alpha 2|elongation factor-1 alpha|statin S1|statin-like