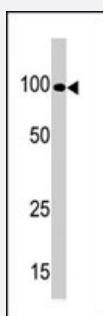


KSR1 polyclonal antibody

Catalog # PAB2765

Size 400 uL

Applications



Western Blot (Cell lysate)

Western blot analysis of KSR1 polyclonal antibody (Cat # PAB2765) in T-47D cell line lysate. KSR1 (arrow) was detected using the purified polyclonal antibody.

Specification

Product Description	Rabbit polyclonal antibody raised against synthetic peptide of KSR1.
Immunogen	A synthetic peptide (conjugated with KLH) corresponding to N-terminus of human KSR1.
Host	Rabbit
Reactivity	Human
Form	Liquid
Purification	Protein G purification
Recommend Usage	Western Blot (1:1000) The optimal working dilution should be determined by the end user.
Storage Buffer	In PBS (0.09% sodium azide)
Storage Instruction	Store at 4°C. For long term storage store at -20°C. Aliquot to avoid repeated freezing and thawing.
Note	This product contains sodium azide: a POISONOUS AND HAZARDOUS SUBSTANCE which should be handled by trained staff only.

Applications

- Western Blot (Cell lysate)

Western blot analysis of KSR1 polyclonal antibody (Cat # PAB2765) in T-47D cell line lysate. KSR1 (arrow) was detected using the purified polyclonal antibody.

Gene Info — KSR1

Entrez GeneID	8844
Protein Accession#	NP_055053:Q8MT5
Gene Name	KSR1
Gene Alias	KSR, RSU2
Gene Description	kinase suppressor of ras 1
Omim ID	601132
Gene Ontology	Hyperlink
Other Designations	kinase suppressor of ras

Disease

- [Tobacco Use Disorder](#)