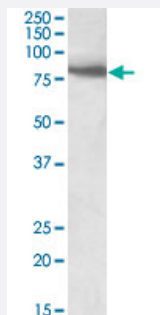


BBS7 polyclonal antibody

Catalog # PAB27647 Size 100 ug

Applications



Western Blot (Tissue lysate)

BBS7 polyclonal antibody (Cat # PAB27647) (1ug/ml) staining of human skeletal muscle lysate (35ug protein in RIPA buffer). Primary incubation was 1 hour. Detected by chemiluminescence.

Specification

Product Description	Goat polyclonal antibody raised against synthetic peptide of BBS7.
Immunogen	A synthetic peptide corresponding to internal region of human BBS7.
Sequence	HCILEEADHLQE
Host	Goat
Theoretical MW (kDa)	80
Reactivity	Chicken, Dog, Human, Mouse, Rat
Purification	Antigen affinity purification
Concentration	0.5 mg/mL
Recommend Usage	ELISA (1:128000) Western Blot (1-3ug/ml) The optimal working dilution should be determined by the end user.
Storage Buffer	In Tris saline, pH 7.3 (0.02% sodium azide, 0.5% BSA)

Storage Instruction

Store at -20°C.
Aliquot to avoid repeated freezing and thawing.

Note

This product contains sodium azide: a POISONOUS AND HAZARDOUS SUBSTANCE which should be handled by trained staff only.

Applications

- Western Blot (Tissue lysate)

BBS7 polyclonal antibody (Cat # PAB27647) (1ug/ml) staining of human skeletal muscle lysate (35ug protein in RIPA buffer). Primary incubation was 1 hour. Detected by chemiluminescence.

Gene Info — BBS7

Entrez GeneID[55212](#)**Protein Accession#**[NP_789794.1;NP_060660.2](#)**Gene Name**

BBS7

Gene Alias

BBS2L1, FLJ10715

Gene Description

Bardet-Biedl syndrome 7

Omim ID[209900 607590](#)**Gene Ontology**[Hyperlink](#)**Gene Summary**

Mutations in this gene have been observed in patients with Bardet-Biedl syndrome type 7. The encoded protein may play a role in eye, limb, cardiac and reproductive system development. Two transcript variants encoding distinct isoforms have been identified for this gene. [provided by RefSeq]

Other Designations

BBS2-like 1|Bardet-Biedl syndrome 7 protein

Disease

- [Bardet-Biedl Syndrome](#)
- [Obesity](#)
- [Retinal Diseases](#)