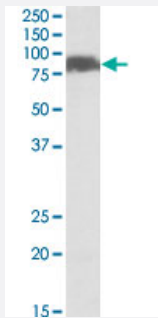


# SLC26A6 polyclonal antibody

Catalog # PAB27646      Size 100 ug

## Applications



### Western Blot (Tissue lysate)

SLC26A6 polyclonal antibody (Cat # PAB27646) (0.1ug/ml) staining of human pancreas lysate (35ug protein in RIPA buffer). Primary incubation was 1 hour. Detected by chemiluminescence.

## Specification

<b>Product Description</b>	Goat polyclonal antibody raised against synthetic peptide of SLC26A6.
<b>Immunogen</b>	A synthetic peptide corresponding to internal region of human SLC26A6.
<b>Sequence</b>	RDVAEYSEAKEVR
<b>Host</b>	Goat
<b>Theoretical MW (kDa)</b>	80
<b>Reactivity</b>	Human, Mouse, Pig, Rat
<b>Purification</b>	Antigen affinity purification
<b>Concentration</b>	0.5 mg/mL
<b>Recommend Usage</b>	ELISA (1:64000) Western Blot (0.1-0.3ug/ml) The optimal working dilution should be determined by the end user.
<b>Storage Buffer</b>	In Tris saline, pH 7.3 (0.02% sodium azide, 0.5% BSA)

**Storage Instruction**

Store at -20°C.  
Aliquot to avoid repeated freezing and thawing.

**Note**

This product contains sodium azide: a POISONOUS AND HAZARDOUS SUBSTANCE which should be handled by trained staff only.

## Applications

- Western Blot (Tissue lysate)

SLC26A6 polyclonal antibody (Cat # PAB27646) (0.1ug/ml) staining of human pancreas lysate (35ug protein in RIPA buffer). Primary incubation was 1 hour. Detected by chemiluminescence.

## Gene Info — SLC26A6

**Entrez GeneID**[65010](#)**Protein Accession#**[NP\\_075062.2;NP\\_599025.2;NP\\_602298.2;NP\\_001035544.1](#)**Gene Name**

SLC26A6

**Gene Alias**

DKFZp586E1422

**Gene Description**

solute carrier family 26, member 6

**Omim ID**[610068](#)**Gene Ontology**[Hyperlink](#)**Gene Summary**

This gene belongs to the solute carrier 26 family, whose members encode anion transporter proteins. This particular family member encodes a protein involved in transporting chloride, oxalate, sulfate and bicarbonate. Several alternatively spliced transcript variants of this gene, encoding distinct isoforms, have been described, but the full-length nature of some of these variants has not been determined. [provided by RefSeq]

**Other Designations**

anion transporter 1|pendrin L1|pendrin-like protein 1|sulfate anion transporter

## Publication Reference

- [Short-Chain Fatty Acids Reduced Renal Calcium Oxalate Stones by Regulating the Expression of Intestinal Oxalate Transporter SLC26A6.](#)

Yu Liu, Xi Jin, Yucheng Ma, Zhongyu Jian, Zhitao Wei, Liyuan Xiang, Qun Sun, Shiqian Qi, Kunjie Wang, Hong Li.  
mSystems 2021 Dec; 6(6):e0104521.

Application: WB-Ce, WB-Ti, Human, Rat, Caco-2 cells, Rat cecum, Rat colon, Rat ileum

## Disease

- [Genetic Predisposition to Disease](#)
- [Hypercalciuria](#)
- [Hyperparathyroidism](#)
- [Kidney Calculi](#)
- [Nephrolithiasis](#)
- [Schizophrenia](#)