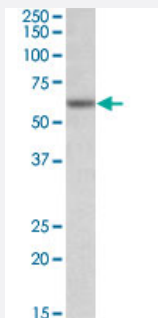


Gla1 polyclonal antibody

Catalog # PAB27636 Size 100 ug

Applications



Western Blot (Tissue lysate)

Gla1 polyclonal antibody (Cat # PAB27636) (0.3ug/ml) staining of mouse testis lysate (35ug protein in RIPA buffer). Primary incubation was 1 hour. Detected by chemiluminescence.

Specification

Product Description Goat polyclonal antibody raised against synthetic peptide of Gla1.

Immunogen A synthetic peptide corresponding to internal region of rat Gla1.

Sequence CLQAKDGISVKGAN

Host Goat

Theoretical MW (kDa) 60

Reactivity Chicken, Dog, Human, Mouse, Pig, Rat

Purification Antigen affinity purification

Concentration 0.5 mg/mL

Recommend Usage
ELISA (1:128000)
Western Blot (0.3-1 ug/ml)
The optimal working dilution should be determined by the end user.

Storage Buffer In Tris saline, pH 7.3 (0.02% sodium azide, 0.5% BSA)

Storage Instruction

Store at -20°C.
Aliquot to avoid repeated freezing and thawing.

Note

This product contains sodium azide: a POISONOUS AND HAZARDOUS SUBSTANCE which should be handled by trained staff only.

Applications

- Western Blot (Tissue lysate)

Gla1 polyclonal antibody (Cat # PAB27636) (0.3ug/ml) staining of mouse testis lysate (35ug protein in RIPA buffer). Primary incubation was 1 hour. Detected by chemiluminescence.

Gene Info — Gla1

Entrez GeneID[25674](#)**Protein Accession#**[NP_037265.1](#)**Gene Name**

Gla1

Gene Alias

GLYRA1

Gene Description

glycine receptor, alpha 1

Gene Ontology[Hyperlink](#)**Gene Summary**

O

Other Designations

glycine receptor, alpha 1 subunit