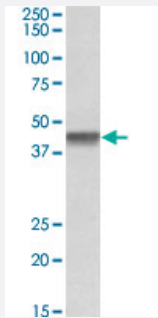


PTCD2 polyclonal antibody

Catalog # PAB27633 Size 100 ug

Applications



Western Blot (Cell lysate)

PTCD2 polyclonal antibody (Cat # PAB27633) (1ug/ml) staining of Daudi lysate (35ug protein in RIPA buffer). Primary incubation was 1 hour. Detected by chemiluminescence.

Specification

Product Description	Goat polyclonal antibody raised against synthetic peptide of PTCD2.
Immunogen	A synthetic peptide corresponding to near C-terminus region of human PTCD2.
Sequence	TLHITGQVTDSL D
Host	Goat
Theoretical MW (kDa)	45
Reactivity	Human
Purification	Antigen affinity purification
Concentration	0.5 mg/mL
Recommend Usage	ELISA (1:128000) Western Blot (1-3ug/ml) The optimal working dilution should be determined by the end user.
Storage Buffer	In Tris saline, pH 7.3 (0.02% sodium azide, 0.5% BSA)

Storage Instruction

Store at -20°C.
Aliquot to avoid repeated freezing and thawing.

Note

This product contains sodium azide: a POISONOUS AND HAZARDOUS SUBSTANCE which should be handled by trained staff only.

Applications

- Western Blot (Cell lysate)

PTCD2 polyclonal antibody (Cat # PAB27633) (1ug/ml) staining of Daudi lysate (35ug protein in RIPA buffer). Primary incubation was 1 hour. Detected by chemiluminescence.

Gene Info — PTCD2

Entrez GeneID	79810
----------------------	-----------------------

Protein Accession#	NP_079030.3
---------------------------	-----------------------------

Gene Name	PTCD2
------------------	-------

Gene Alias	FLJ12598
-------------------	----------

Gene Description	pentatricopeptide repeat domain 2
-------------------------	-----------------------------------

Gene Ontology	Hyperlink
----------------------	---------------------------

Other Designations	OTTHUMP00000126945
---------------------------	--------------------