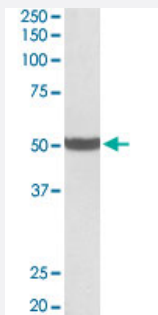


# PTCD2 polyclonal antibody

Catalog # PAB27632      Size 100 ug

## Applications



### Western Blot (Tissue lysate)

PTCD2 polyclonal antibody (Cat # PAB27632) (0.5ug/ml) staining of human liver lysate (35ug protein in RIPA buffer). Primary incubation was 1 hour. Detected by chemiluminescence.

## Specification

<b>Product Description</b>	Goat polyclonal antibody raised against synthetic peptide of PTCD2.
<b>Immunogen</b>	A synthetic peptide corresponding to amino acids 214-226 at internal region of human PTCD2.
<b>Sequence</b>	NSPESFKICTTLR
<b>Host</b>	Goat
<b>Theoretical MW (kDa)</b>	50
<b>Reactivity</b>	Human
<b>Purification</b>	Antigen affinity purification
<b>Concentration</b>	0.5 mg/mL
<b>Recommend Usage</b>	ELISA (1:128000) Western Blot (0.5-2ug/ml) The optimal working dilution should be determined by the end user.
<b>Storage Buffer</b>	In Tris saline, pH 7.3 (0.02% sodium azide, 0.5% BSA)

**Storage Instruction**

Store at -20°C.  
Aliquot to avoid repeated freezing and thawing.

**Note**

This product contains sodium azide: a POISONOUS AND HAZARDOUS SUBSTANCE which should be handled by trained staff only.

## Applications

- Western Blot (Tissue lysate)

PTCD2 polyclonal antibody (Cat # PAB27632) (0.5ug/ml) staining of human liver lysate (35ug protein in RIPA buffer). Primary incubation was 1 hour. Detected by chemiluminescence.

## Gene Info — PTCD2

**Entrez GeneID** [79810](#)

**Protein Accession#** [NP\\_079030.3](#)

**Gene Name** PTCD2

**Gene Alias** FLJ12598

**Gene Description** pentatricopeptide repeat domain 2

**Gene Ontology** [Hyperlink](#)

**Other Designations** OTTHUMP00000126945