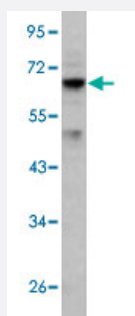


RIOK1 polyclonal antibody

Catalog # PAB2762

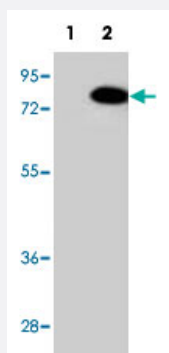
Size 400 uL

Applications



Western Blot (Cell lysate)

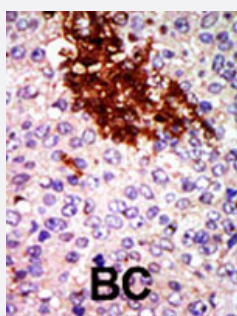
Western blot analysis of K-562 cell lysate (35 ug/lane) with RIOK1 polyclonal antibody (Cat # PAB2762).



Western Blot (Transfected lysate)

Western blot analysis of RIOK1 (arrow) using RIOK1 polyclonal antibody (Cat # PAB2762).

293 cell lysates (2 ug/lane) either nontransfected (Lane 1) or transiently transfected with the RIOK1 gene (Lane 2).



Immunohistochemistry (Formalin/PFA-fixed paraffin-embedded sections)

Formalin-fixed and paraffin-embedded human cancer tissue reacted with RIOK1 polyclonal antibody (Cat # PAB2762), which was peroxidase-conjugated to the secondary antibody, followed by DAB staining. This data demonstrates the use of this antibody for immunohistochemistry; clinical relevance has not been evaluated. BC = breast carcinoma.

Specification

Product Description

Rabbit polyclonal antibody raised against synthetic peptide of RIOK1.

Immunogen	A synthetic peptide (conjugated with KLH) corresponding to N-terminus of human R1OK1.
Host	Rabbit
Reactivity	Human
Form	Liquid
Purification	Protein G purification
Recommend Usage	Western Blot (1:1000) Immunohistochemistry (1:50-100) The optimal working dilution should be determined by the end user.
Storage Buffer	In PBS (0.09% sodium azide)
Storage Instruction	Store at 4°C. For long term storage store at -20°C. Aliquot to avoid repeated freezing and thawing.
Note	This product contains sodium azide: a POISONOUS AND HAZARDOUS SUBSTANCE which should be handled by trained staff only.

Applications

- Western Blot (Cell lysate)

Western blot analysis of K-562 cell lysate (35 ug/lane) with R1OK1 polyclonal antibody (Cat # PAB2762).

- Western Blot (Transfected lysate)

Western blot analysis of R1OK1 (arrow) using R1OK1 polyclonal antibody (Cat # PAB2762).
293 cell lysates (2 ug/lane) either nontransfected (Lane 1) or transiently transfected with the R1OK1 gene (Lane 2).

- Immunohistochemistry (Formalin/PFA-fixed paraffin-embedded sections)

Formalin-fixed and paraffin-embedded human cancer tissue reacted with R1OK1 polyclonal antibody (Cat # PAB2762), which was peroxidase-conjugated to the secondary antibody, followed by DAB staining. This data demonstrates the use of this antibody for immunohistochemistry; clinical relevance has not been evaluated. BC = breast carcinoma.

Gene Info — R1OK1

Entrez GeneID	83732
Protein Accession#	NP_113668:Q9BRS2
Gene Name	R1OK1
Gene Alias	AD034, FLJ30006, MGC12903, bA288G3.1

Gene Description	RIO kinase 1 (yeast)
Gene Ontology	Hyperlink
Gene Summary	This gene includes two alternatively spliced transcript variants, which encode different isoforms. The function of this gene has not been determined. [provided by RefSeq]
Other Designations	OTTHUMP00000015999 RIO kinase 1 prematurely truncated due to insertion of intronic sequence

Publication Reference

- [Complete sequencing and characterization of 21,243 full-length human cDNAs.](#)

Ota T, Suzuki Y, Nishikawa T, Otsuki T, Sugiyama T, Irie R, Wakamatsu A, Hayashi K, Sato H, Nagai K, Kimura K, Makita H, Sekine M, Obayashi M, Nishi T, Shibahara T, Tanaka T, Ishii S, Yamamoto J, Saito K, Kawai Y, Isono Y, Nakamura Y, Nagahari K, Murakami K, Yasuda T, Iwayanagi T, Wagatsuma M, Shiratori A, Sudo H, Hosoiri T, Kaku Y, Kodaira H, Kondo H, Sugawara M, Takahashi M, Kanda K, Yokoi T, Furuya T, Kikkawa E, Omura Y, Abe K, Kamihara K, Katsuta N, Sato K, Tanikawa M, Yamazaki M, Ninomiya K

Nature Genetics 2003 Dec; 36(1):40.