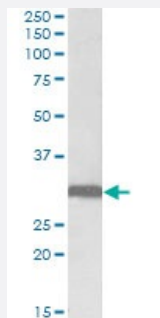


STOM polyclonal antibody

Catalog # PAB27619 Size 100 ug

Applications



Western Blot (Tissue lysate)

STOM polyclonal antibody (Cat # PAB27619) (0.1ug/ml) staining of human lung lysate (35ug protein in RIPA buffer). Primary incubation was 1 hour. Detected by chemiluminescence.

Specification

Product Description Goat polyclonal antibody raised against synthetic peptide of STOM.

Immunogen A synthetic peptide corresponding to human STOM.

Sequence EKRHTRDSEAQR

Host Goat

Theoretical MW (kDa) 30

Reactivity Human

Purification Antigen affinity purification

Concentration 0.5 mg/mL

Recommend Usage
ELISA (1:128000)
Western Blot (0.1-0.3ug/ml)
The optimal working dilution should be determined by the end user.

Storage Buffer In Tris saline, pH 7.3 (0.02% sodium azide, 0.5% BSA)

Storage Instruction

Store at -20°C.
Aliquot to avoid repeated freezing and thawing.

Note

This product contains sodium azide: a POISONOUS AND HAZARDOUS SUBSTANCE which should be handled by trained staff only.

Applications

- Western Blot (Tissue lysate)

STOM polyclonal antibody (Cat # PAB27619) (0.1ug/ml) staining of human lung lysate (35ug protein in RIPA buffer). Primary incubation was 1 hour. Detected by chemiluminescence.

Gene Info — STOM

Entrez GeneID[2040](#)**Protein Accession#**[NP_004090.4;NP_937837.1](#)**Gene Name**

STOM

Gene Alias

BND7, EPB7, EPB72

Gene Description

stomatin

Omim ID[133090](#)**Gene Ontology**[Hyperlink](#)**Other Designations**

OTTHUMP00000022024|OTTHUMP00000022025|OTTHUMP00000064035|erythrocyte membrane protein band 7.2 (stomatin)

Disease

- [Cleft Lip](#)
- [Cleft Palate](#)