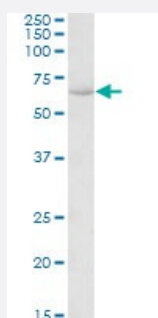


HSPA13 polyclonal antibody

Catalog # PAB27618 Size 100 ug

Applications



Western Blot (Tissue lysate)

HSPA13 polyclonal antibody (Cat # PAB27618) (0.1ug/ml) staining of human uterus lysate (35ug protein in RIPA buffer). Primary incubation was 1 hour. Detected by chemiluminescence.

Specification

Product Description	Goat polyclonal antibody raised against synthetic peptide of HSPA13.
Immunogen	A synthetic peptide corresponding to amino acids 83-95 of human HSPA13.
Sequence	ESVELADSNPQNT
Host	Goat
Theoretical MW (kDa)	65
Reactivity	Human
Purification	Antigen affinity purification
Concentration	0.5 mg/mL
Recommend Usage	ELISA (1:128000) Western Blot (0.1-0.3ug/ml) The optimal working dilution should be determined by the end user.
Storage Buffer	In Tris saline, pH 7.3 (0.02% sodium azide, 0.5% BSA)

Storage Instruction

Store at -20°C.
Aliquot to avoid repeated freezing and thawing.

Note

This product contains sodium azide: a POISONOUS AND HAZARDOUS SUBSTANCE which should be handled by trained staff only.

Applications

- Western Blot (Tissue lysate)

HSPA13 polyclonal antibody (Cat # PAB27618) (0.1ug/ml) staining of human uterus lysate (35ug protein in RIPA buffer).
Primary incubation was 1 hour. Detected by chemiluminescence.

Gene Info — HSPA13

Entrez GeneID[6782](#)**Protein Accession#**[NP_008879.3](#)**Gene Name**

HSPA13

Gene Alias

STCH

Gene Description

heat shock protein 70kDa family, member 13

Omim ID[601100](#)**Gene Ontology**[Hyperlink](#)**Gene Summary**

The protein encoded by this gene is a member of the heat shock protein 70 family and is found associated with microsomes. Members of this protein family play a role in the processing of cytosolic and secretory proteins, as well as in the removal of denatured or incorrectly-folded proteins. The encoded protein contains an ATPase domain and has been shown to associate with a ubiquitin-like protein. [provided by RefSeq]

Other Designations

heat shock protein 70kDa family member 13|microsomal stress 70 protein ATPase core|stress 70 protein chaperone, microsome-associated, 60kD|stress 70 protein chaperone, microsome-associated, 60kDa

Disease

- [Genetic Predisposition to Disease](#)
- [Obesity](#)

- [Stomach Neoplasms](#)