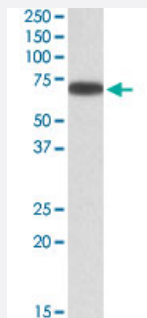


# ERO1L polyclonal antibody

Catalog # PAB27602      Size 100 ug

## Applications



### Western Blot (Cell lysate)

ERO1L polyclonal antibody (Cat # PAB27602) (0.3ug/ml) staining of A-431 lysate (35ug protein in RIPA buffer). Primary incubation was 1 hour. Detected by chemiluminescence.

## Specification

<b>Product Description</b>	Goat polyclonal antibody raised against synthetic peptide of ERO1L.
<b>Immunogen</b>	A synthetic peptide corresponding to amino acids 105-118 at internal region of human ERO1L.
<b>Sequence</b>	QSDEVPDGIKSASY
<b>Host</b>	Goat
<b>Theoretical MW (kDa)</b>	70
<b>Reactivity</b>	Chicken, Dog, Human, Mouse, Pig, Rat
<b>Purification</b>	Antigen affinity purification
<b>Concentration</b>	0.5 mg/mL
<b>Recommend Usage</b>	ELISA (1:32000) Western Blot (0.1-0.3ug/ml) The optimal working dilution should be determined by the end user.
<b>Storage Buffer</b>	In Tris saline, pH 7.3 (0.02% sodium azide, 0.5% BSA)

**Storage Instruction**

Store at -20°C.  
Aliquot to avoid repeated freezing and thawing.

**Note**

This product contains sodium azide: a POISONOUS AND HAZARDOUS SUBSTANCE which should be handled by trained staff only.

## Applications

- Western Blot (Cell lysate)

ERO1L polyclonal antibody (Cat # PAB27602) (0.3ug/ml) staining of A-431 lysate (35ug protein in RIPA buffer). Primary incubation was 1 hour. Detected by chemiluminescence.

## Gene Info — ERO1L

**Entrez GeneID** [30001](#)

**Protein Accession#** [NP\\_055399.1](#)

**Gene Name** ERO1L

**Gene Alias** ERO1-alpha

**Gene Description** ERO1-like (S. cerevisiae)

**Gene Ontology** [Hyperlink](#)

**Other Designations** ERO1-like

## Pathway

- [Vibrio cholerae infection](#)

## Disease

- [Tobacco Use Disorder](#)