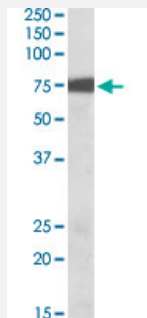


RPS6KA2 polyclonal antibody

Catalog # PAB27592 Size 100 ug

Applications



Western Blot (Tissue lysate)

RPS6KA2 polyclonal antibody (Cat # PAB27592) (0.01ug/ml) staining of mouse lung lysate (35ug protein in RIPA buffer). Primary incubation was 1 hour. Detected by chemiluminescence.

Specification

Product Description Goat polyclonal antibody raised against synthetic peptide of RPS6KA2.

Immunogen A synthetic peptide corresponding to C-terminus of human RPS6KA2.

Sequence EYLSPNQLSRQDVH

Host Goat

Theoretical MW (kDa) 75

Reactivity Horse, Human, Mouse, Rat

Purification Antigen affinity purification

Concentration 0.5 mg/mL

Recommend Usage
ELISA (1:64000)
Western Blot (0.01-0.03ug/ml)
The optimal working dilution should be determined by the end user.

Storage Buffer In Tris saline, pH 7.3 (0.02% sodium azide, 0.5% BSA)

Storage Instruction

Store at -20°C.
Aliquot to avoid repeated freezing and thawing.

Note

This product contains sodium azide: a POISONOUS AND HAZARDOUS SUBSTANCE which should be handled by trained staff only.

Applications

- Western Blot (Tissue lysate)

RPS6KA2 polyclonal antibody (Cat # PAB27592) (0.01ug/ml) staining of mouse lung lysate (35ug protein in RIPA buffer). Primary incubation was 1 hour. Detected by chemiluminescence.

Gene Info — RPS6KA2

Entrez GeneID[6196](#)**Protein Accession#**[NP_066958.2;NP_001006933.1](#)**Gene Name**

RPS6KA2

Gene Alias

HU-2, MAPKAPK1C, RSK, RSK3, S6K-alpha, S6K-alpha2, p90-RSK3, pp90RSK3

Gene Description

ribosomal protein S6 kinase, 90kDa, polypeptide 2

Omim ID[601685](#)**Gene Ontology**[Hyperlink](#)**Gene Summary**

This gene encodes a member of the RSK (ribosomal S6 kinase) family of serine/threonine kinases. This kinase contains 2 non-identical kinase catalytic domains and phosphorylates various substrates, including members of the mitogen-activated kinase (MAPK) signalling pathway. The activity of this protein has been implicated in controlling cell growth and differentiation. Alternate transcriptional splice variants, encoding different isoforms, have been characterized. [provided by RefSeq]

Other Designations

ribosomal S6 kinase 3|ribosomal protein S6 kinase alpha 2|ribosomal protein S6 kinase, 90kD, polypeptide 2

Pathway

- [Long-term potentiation](#)
- [MAPK signaling pathway](#)
- [mTOR signaling pathway](#)

- [Neurotrophin signaling pathway](#)

Disease

- [Tobacco Use Disorder](#)