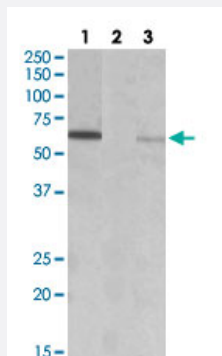


MKRN1 polyclonal antibody

Catalog # PAB27575 Size 100 ug

Applications



Western Blot (Transfected lysate)

HEK293 lysate (10ug protein in RIPA buffer) over expressing Human MKRN1 with DYKDDDDK tag probed with MKRN1 polyclonal antibody (Cat # PAB27575) (0.3ug/ml) in Lane 1 and probed with anti- DYKDDDDK Tag (1/1000) in Lane 3.

Lane 2: Mock-transfected HEK293 probed with MKRN1 polyclonal antibody (Cat # PAB27575) (1mg/ml). Primary incubations were for 1 hour. Detected by chemiluminescence.

Specification

Product Description	Goat polyclonal antibody raised against synthetic peptide of MKRN1.
Immunogen	A synthetic peptide corresponding to amino acids 105-118 at internal region of human MKRN1.
Sequence	RYEHSKPLKQEEAT
Host	Goat
Theoretical MW (kDa)	60
Reactivity	Chicken, Dog, Human, Mouse, Pig
Purification	Antigen affinity purification
Concentration	0.5 mg/mL
Recommend Usage	ELISA (1:64000) Western Blot (0.3-1 ug/ml) The optimal working dilution should be determined by the end user.
Storage Buffer	In Tris saline, pH 7.3 (0.02% sodium azide, 0.5% BSA)

Storage Instruction

Store at -20°C.
Aliquot to avoid repeated freezing and thawing.

Note

This product contains sodium azide: a POISONOUS AND HAZARDOUS SUBSTANCE which should be handled by trained staff only.

Applications

- Western Blot (Transfected lysate)

HEK293 lysate (10ug protein in RIPA buffer) over expressing Human MKRN1 with DYKDDDDK tag probed with MKRN1 polyclonal antibody (Cat # PAB27575) (0.3ug/ml) in Lane 1 and probed with anti- DYKDDDDK Tag (1/1000) in Lane 3. Lane 2: Mock-transfected HEK293 probed with MKRN1 polyclonal antibody (Cat # PAB27575) (1mg/ml). Primary incubations were for 1 hour. Detected by chemiluminescence.

Gene Info — MKRN1

Entrez GeneID[23608](#)**Protein Accession#**[NP_038474.2;NP_001138597.1](#)**Gene Name**

MKRN1

Gene Alias

FLJ21334, RNF61

Gene Description

makorin ring finger protein 1

Omim ID[607754](#)**Gene Ontology**[Hyperlink](#)**Gene Summary**

The Makorin ring finger protein-1 gene (MKRN1) is a highly transcribed, intron-containing source for a family of intronless mammalian genes encoding a novel class of zinc finger proteins. Phylogenetic analyses indicate that the MKRN1 gene is the ancestral founder of this gene family (Gray et al., 2000 [PubMed 10843807]).[supplied by OMIM]

Other Designations

-

Disease

- [Tobacco Use Disorder](#)