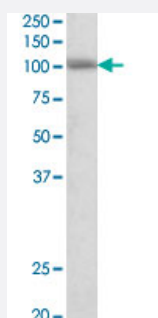


SIDT1 polyclonal antibody

Catalog # PAB27573 Size 100 ug

Applications



Western Blot (Tissue lysate)

SIDT1 polyclonal antibody (Cat # PAB27573) (0.3ug/ml) staining of human cerebellum lysate (35ug protein in RIPA buffer). Primary incubation was 1 hour. Detected by chemiluminescence.

Specification

Product Description	Goat polyclonal antibody raised against synthetic peptide of SIDT1.
Immunogen	A synthetic peptide corresponding to amino acids 334-347 at internal region of human SIDT1.
Sequence	RFQRKSIDGSFGSN
Host	Goat
Theoretical MW (kDa)	100
Reactivity	Human, Mouse, Rat
Purification	Antigen affinity purification
Concentration	0.5 mg/mL
Recommend Usage	ELISA (1:32000) Western Blot (0.3-1 ug/ml) The optimal working dilution should be determined by the end user.
Storage Buffer	In Tris saline, pH 7.3 (0.02% sodium azide, 0.5% BSA)

Storage Instruction

Store at -20°C.
Aliquot to avoid repeated freezing and thawing.

Note

This product contains sodium azide: a POISONOUS AND HAZARDOUS SUBSTANCE which should be handled by trained staff only.

Applications

- Western Blot (Tissue lysate)

SIDT1 polyclonal antibody (Cat # PAB27573) (0.3ug/ml) staining of human cerebellum lysate (35ug protein in RIPA buffer). Primary incubation was 1 hour. Detected by chemiluminescence.

Gene Info — SIDT1

Entrez GeneID [54847](#)

Protein Accession# [NP_060169.2](#)

Gene Name SIDT1

Gene Alias B830021E24Rik, FLJ20174, SID-1, SID1

Gene Description SID1 transmembrane family, member 1

Omim ID [606816](#)

Gene Ontology [Hyperlink](#)

Gene Summary O

Other Designations -

Disease

- [Tobacco Use Disorder](#)