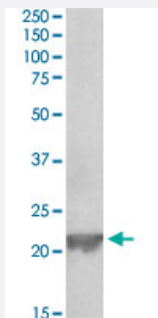


Gpx1 polyclonal antibody

Catalog # PAB27563 Size 100 ug

Applications



Western Blot (Tissue lysate)

Gpx1 polyclonal antibody (Cat # PAB27563) (0.3ug/ml) staining of rat liver lysate (35ug protein in RIPA buffer). Primary incubation was 1 hour. Detected by chemiluminescence.

Specification

| | |
|-----------------------------|---|
| Product Description | Goat polyclonal antibody raised against synthetic peptide of Gpx1. |
| Immunogen | A synthetic peptide corresponding to near N-terminus region of mouse Gpx1. |
| Sequence | QSTVYAFSARP |
| Host | Goat |
| Theoretical MW (kDa) | 22 |
| Reactivity | Chicken, Mouse, Rat |
| Purification | Antigen affinity purification |
| Concentration | 0.5 mg/mL |
| Recommend Usage | ELISA (1:64000) Western Blot (0.3-1 ug/ml) The optimal working dilution should be determined by the end user. |
| Storage Buffer | In Tris saline, pH 7.3 (0.02% sodium azide, 0.5% BSA) |

Storage Instruction

Store at -20°C.
Aliquot to avoid repeated freezing and thawing.

Note

This product contains sodium azide: a POISONOUS AND HAZARDOUS SUBSTANCE which should be handled by trained staff only.

Applications

- Western Blot (Tissue lysate)

Gpx1 polyclonal antibody (Cat # PAB27563) (0.3ug/ml) staining of rat liver lysate (35ug protein in RIPA buffer). Primary incubation was 1 hour. Detected by chemiluminescence.

Gene Info — Gpx1

Entrez GeneID [14775](#)

Protein Accession# [NP_032186.2](#)

Gene Name Gpx1

Gene Alias AI195024, AL033363, CGPx, GPx-1, GSHPx-1, Gpx

Gene Description glutathione peroxidase 1

Gene Ontology [Hyperlink](#)

Other Designations cellular glutathione peroxidase

Publication Reference

- [Dried plum and chokeberry ameliorate d-galactose-induced aging in mice by regulation of PI3k/Akt-mediated Nrf2 and Nf-kB pathways.](#)

Jeong H, Liu Y, Kim HS.

Experimental Gerontology 2017 May; 95:16.

Application: WB-Ti, Mouse, Mouse liver

- [Hawthorn Fruit Extract Elevates Expression of Nrf2/HO-1 and Improves Lipid Profiles in Ovariectomized Rats.](#)

Yoo JH, Liu Y, Kim HS.

Nutrients 2016 May; 8(5):283.

Application: WB-Ti, Rat, Liver