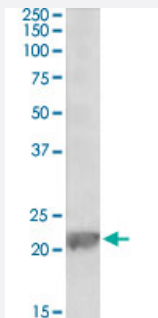


Gpx1 polyclonal antibody

Catalog # PAB27561 Size 100 ug

Applications



Western Blot (Tissue lysate)

Gpx1 polyclonal antibody (Cat # PAB27561) (0.1g/ml) staining of rat liver lysate (35ug protein in RIPA buffer). Primary incubation was 1 hour. Detected by chemiluminescence.

Specification

Product Description	Goat polyclonal antibody raised against synthetic peptide of Gpx1.
Immunogen	A synthetic peptide corresponding to amino acids 53-67 at internal region of mouse Gpx1.
Sequence	DYTEMNDLQKRLGPR
Host	Goat
Theoretical MW (kDa)	22
Reactivity	Chicken, Mouse, Rat
Purification	Antigen affinity purification
Concentration	0.5 mg/mL
Recommend Usage	ELISA (1:128000) Western Blot (0.1-0.3ug/ml) The optimal working dilution should be determined by the end user.
Storage Buffer	In Tris saline, pH 7.3 (0.02% sodium azide, 0.5% BSA)

Storage Instruction

Store at -20°C.
Aliquot to avoid repeated freezing and thawing.

Note

This product contains sodium azide: a POISONOUS AND HAZARDOUS SUBSTANCE which should be handled by trained staff only.

Applications

- Western Blot (Tissue lysate)

Gpx1 polyclonal antibody (Cat # PAB27561) (0.1g/ml) staining of rat liver lysate (35ug protein in RIPA buffer). Primary incubation was 1 hour. Detected by chemiluminescence.

Gene Info — Gpx1

Entrez GeneID [14775](#)

Protein Accession# [NP_032186.2](#)

Gene Name Gpx1

Gene Alias AI195024, AL033363, CGPx, GPx-1, GSHPx-1, Gpx

Gene Description glutathione peroxidase 1

Gene Ontology [Hyperlink](#)

Other Designations cellular glutathione peroxidase

Publication Reference

- [Artemisia ordosica polysaccharide ameliorated LPS-induced growth inhibition and intestinal injury in broilers through enhancing immune-regulation and antioxidant capacity.](#)

Yuan Yuan Xing, Yankai Zheng, Shuo Yang, Linhui Zhang, Shiwei Guo, Lulu Shi, Yuanqing Xu, Xiao Jin, Sumei Yan, Binlin Shi.
The Journal of Nutritional Biochemistry 2023 May; 115:109284.

Application: WB-Ce, Chicken, Chicken jejunum