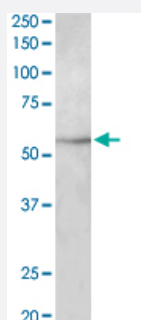


TUBB3 polyclonal antibody

Catalog # PAB27556

Size 100 ug

Applications



Western Blot (Cell lysate)

TUBB3 polyclonal antibody (Cat # PAB27556) (2ug/ml) staining of HepG2 lysate (35ug protein in RIPA buffer). Primary incubation was 1 hour. Detected by chemiluminescence.

Specification

Product Description	Goat polyclonal antibody raised against synthetic peptide of TUBB3.
Immunogen	A synthetic peptide corresponding to near N-terminus region of human TUBB3.
Sequence	DPSGNYVGDS
Host	Goat
Theoretical MW (kDa)	52
Reactivity	Chicken, Human, Mouse, Pig, Rat
Purification	Antigen affinity purification
Concentration	0.5 mg/mL
Recommend Usage	ELISA (1:1000) Western Blot (1-3ug/ml) The optimal working dilution should be determined by the end user.
Storage Buffer	In Tris saline, pH 7.3 (0.02% sodium azide, 0.5% BSA)

Storage Instruction

Store at -20°C.
Aliquot to avoid repeated freezing and thawing.

Note

This product contains sodium azide: a POISONOUS AND HAZARDOUS SUBSTANCE which should be handled by trained staff only.

Applications

- Western Blot (Cell lysate)

TUBB3 polyclonal antibody (Cat # PAB27556) (2ug/ml) staining of HepG2 lysate (35ug protein in RIPA buffer). Primary incubation was 1 hour. Detected by chemiluminescence.

Gene Info — TUBB3

Entrez GeneID [10381](#)

Protein Accession# [NP_006077.2](#)

Gene Name TUBB3

Gene Alias MC1R, TUBB4, beta-4

Gene Description tubulin, beta 3

Omim ID [602661](#)

Gene Ontology [Hyperlink](#)

Gene Summary O

Other Designations tubulin, beta, 4

Pathway

- [Gap junction](#)
- [Pathogenic Escherichia coli infection - EHEC](#)