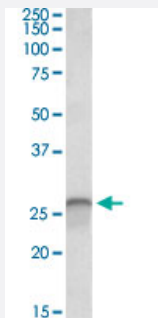


# CALB1 polyclonal antibody

Catalog # PAB27548

Size 100 ug

## Applications



### Western Blot (Tissue lysate)

CALB1 polyclonal antibody (Cat # PAB27548) (0.03ug/ml) staining of human Cerebellum lysate (35ug protein in RIPA buffer). Primary incubation was 1 hour. Detected by chemiluminescence.

## Specification

<b>Product Description</b>	Goat polyclonal antibody raised against synthetic peptide of CALB1.
<b>Immunogen</b>	A synthetic peptide corresponding to internal region of human CALB1.
<b>Sequence</b>	KTFVDQYGQRDDGK
<b>Host</b>	Goat
<b>Theoretical MW (kDa)</b>	26
<b>Reactivity</b>	Chicken, Dog, Human, Pig, Rat
<b>Purification</b>	Antigen affinity purification
<b>Concentration</b>	0.5 mg/mL
<b>Recommend Usage</b>	ELISA (1:128000) Western Blot (0.03-0.1ug/ml) The optimal working dilution should be determined by the end user.
<b>Storage Buffer</b>	In Tris saline, pH 7.3 (0.02% sodium azide, 0.5% BSA)

**Storage Instruction**

Store at -20°C.  
Aliquot to avoid repeated freezing and thawing.

**Note**

This product contains sodium azide: a POISONOUS AND HAZARDOUS SUBSTANCE which should be handled by trained staff only.

## Applications

- Western Blot (Tissue lysate)

CALB1 polyclonal antibody (Cat # PAB27548) (0.03ug/ml) staining of human Cerebellum lysate (35ug protein in RIPA buffer). Primary incubation was 1 hour. Detected by chemiluminescence.

## Gene Info — CALB1

**Entrez GeneID**[793](#)**Protein Accession#**[NP\\_004920.1](#)**Gene Name**

CALB1

**Gene Alias**

CALB

**Gene Description**

calbindin 1, 28kDa

**Omim ID**[114050](#)**Gene Ontology**[Hyperlink](#)**Gene Summary**

Calbindin is a calcium-binding protein belonging to the troponin C superfamily. It was originally described as a 27-kD protein induced by vitamin D in the duodenum of the chick. In the brain, its synthesis is independent of vitamin-D-derived hormones. Calbindin contains 4 active calcium-binding domains, and 2 modified domains that presumably have lost their calcium-binding capacity. The neurons in brains of patients with Huntington disease are calbindin-depleted. [provided by RefSeq]

**Other Designations**

RTVL-H protein|calbindin 1|calbindin 1, (28kD)

## Disease

- [Genetic Predisposition to Disease](#)
- [Parkinson disease](#)