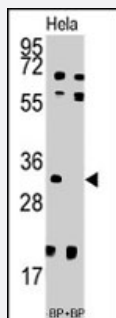


# UCK2 polyclonal antibody

Catalog # PAB2754

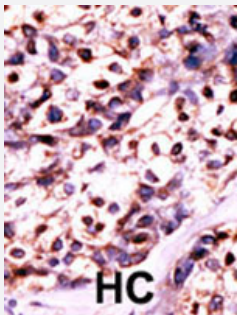
Size 400 uL

## Applications



### Western Blot (Cell lysate)

Western blot analysis of UCK2 polyclonal antibody (Cat # PAB2754) pre-incubated with and without blocking peptide (BP7192a) in HeLa cell line lysate. UCK2 (arrow) was detected using the purified polyclonal antibody.



### Immunohistochemistry (Formalin/PFA-fixed paraffin-embedded sections)

Formalin-fixed and paraffin-embedded human cancer tissue reacted with UCK2 polyclonal antibody (Cat # PAB2754), which was peroxidase-conjugated to the secondary antibody, followed by DAB staining. This data demonstrates the use of this antibody for immunohistochemistry; clinical relevance has not been evaluated. BC = breast carcinoma.

## Specification

<b>Product Description</b>	Rabbit polyclonal antibody raised against synthetic peptide of UCK2.
<b>Immunogen</b>	A synthetic peptide (conjugated with KLH) corresponding to N-terminus of human UCK2.
<b>Host</b>	Rabbit
<b>Reactivity</b>	Human
<b>Form</b>	Liquid
<b>Purification</b>	Protein G purification

<b>Recommend Usage</b>	Western Blot (1:1000) Immunohistochemistry (1:50-100) The optimal working dilution should be determined by the end user.
<b>Storage Buffer</b>	In PBS (0.09% sodium azide)
<b>Storage Instruction</b>	Store at 4°C. For long term storage store at -20°C. Aliquot to avoid repeated freezing and thawing.
<b>Note</b>	This product contains sodium azide: a POISONOUS AND HAZARDOUS SUBSTANCE which should be handled by trained staff only.

## Applications

- Western Blot (Cell lysate)

Western blot analysis of UCK2 polyclonal antibody (Cat # PAB2754) pre-incubated with and without blocking peptide (BP7192a) in HeLa cell line lysate. UCK2 (arrow) was detected using the purified polyclonal antibody.

- Immunohistochemistry (Formalin/PFA-fixed paraffin-embedded sections)

Formalin-fixed and paraffin-embedded human cancer tissue reacted with UCK2 polyclonal antibody (Cat # PAB2754), which was peroxidase-conjugated to the secondary antibody, followed by DAB staining. This data demonstrates the use of this antibody for immunohistochemistry; clinical relevance has not been evaluated. BC = breast carcinoma.

## Gene Info — UCK2

<b>Entrez GeneID</b>	<a href="#">7371</a>
<b>Protein Accession#</b>	<a href="#">NP_036606:Q9BZX2</a>
<b>Gene Name</b>	UCK2
<b>Gene Alias</b>	TSA903, UK, UMPK
<b>Gene Description</b>	uridine-cytidine kinase 2
<b>Omim ID</b>	<a href="#">609329</a>
<b>Gene Ontology</b>	<a href="#">Hyperlink</a>
<b>Gene Summary</b>	The protein encoded by this gene catalyzes the phosphorylation of uridine monophosphate to uridine diphosphate. This is the first step in the production of the pyrimidine nucleoside triphosphates required for RNA and DNA synthesis. In addition, an allele of this gene may play a role in mediating nonhumoral immunity to Hemophilus influenzae type B. [provided by RefSeq]
<b>Other Designations</b>	OTTHUMP00000038005 uridine kinase uridine monophosphate kinase

## Publication Reference

- [Crude Extracts, Flavokawain B and Alpinetin Compounds from the Rhizome of Alpinia mutica Induce Cell Death via UCK2 Enzyme Inhibition and in Turn Reduce 18S rRNA Biosynthesis in HT-29 Cells.](#)  
Malami I, Abdul AB, Abdullah R, Kassim NK, Rosli R, Yeap SK, Waziri P, Etti IC, Bello MB.  
PLoS One 2017 Jan; 12(1):e0170233.  
  
Application: WB-Ce, Human, HT-29 cells
- [A crucial role of uridine/cytidine kinase 2 in antitumor activity of 3'-ethynyl nucleosides.](#)  
Murata D, Endo Y, Obata T, Sakamoto K, Syouji Y, Kadohira M, Matsuda A, Sasaki T.  
Drug Metabolism and Disposition 2004 Oct; 32(10):1178.  
  
Application: WB-Ce, Human, HT-1080 cells
- [Reaction of human UMP-CMP kinase with natural and analog substrates.](#)  
Pasti C, Gallois-Montbrun S, Munier-Lehmann H, Veron M, Gilles AM, Deville-Bonne D.  
European Journal of Biochemistry 2003 Apr; 270(8):1784.
- [Characterization of human UMP/CMP kinase and its phosphorylation of D- and L-form deoxycytidine analogue monophosphates.](#)  
Liou JY, Dutschman GE, Lam W, Jiang Z, Cheng YC.  
Cancer Research 2002 Mar; 62(6):1624.  
  
Application: IF, WB, Human, HeLa cells

## Pathway

- [Drug metabolism - other enzymes](#)
- [Metabolic pathways](#)
- [Pyrimidine metabolism](#)

## Disease

- [Genetic Predisposition to Disease](#)
- [Hypertension](#)
- [Osteoporosis](#)