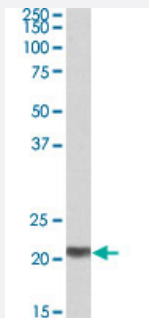


C20orf20 polyclonal antibody

Catalog # PAB27530

Size 100 ug

Applications



Western Blot (Tissue lysate)

C20orf20 polyclonal antibody (Cat # PAB27530) (0.3ug/ml) staining of human testis lysate (35ug protein in RIPA buffer). Primary incubation was 1 hour. Detected by chemiluminescence.

Specification

Product Description	Goat polyclonal antibody raised against synthetic peptide of C20orf20.
Immunogen	A synthetic peptide corresponding to internal region of human C20orf20.
Sequence	CIRDKFSQNIGRQVP
Host	Goat
Theoretical MW (kDa)	21
Reactivity	Chicken, Human, Mouse, Rat
Purification	Antigen affinity purification
Concentration	0.5 mg/mL
Recommend Usage	ELISA (1:32000) Western Blot (0.3-1 ug/ml) The optimal working dilution should be determined by the end user.
Storage Buffer	In Tris saline, pH 7.3 (0.02% sodium azide, 0.5% BSA)

Storage Instruction

Store at -20°C.
Aliquot to avoid repeated freezing and thawing.

Note

This product contains sodium azide: a POISONOUS AND HAZARDOUS SUBSTANCE which should be handled by trained staff only.

Applications

- Western Blot (Tissue lysate)

C20orf20 polyclonal antibody (Cat # PAB27530) (0.3ug/ml) staining of human testis lysate (35ug protein in RIPA buffer). Primary incubation was 1 hour. Detected by chemiluminescence.

Gene Info — C20orf20

Entrez GeneID [55257](#)

Protein Accession# [NP_060740.1](#)

Gene Name C20orf20

Gene Alias Eaf7, FLJ10914, MRG15BP, MRGBP, URCC4

Gene Description chromosome 20 open reading frame 20

Omim ID [611157](#)

Gene Ontology [Hyperlink](#)

Other Designations MRG(MORF4-related gene)-binding protein|MRG-binding protein|OTTHUMP00000031512