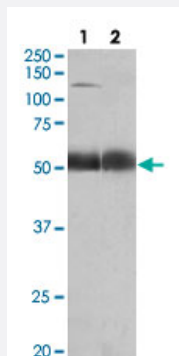


COPA polyclonal antibody

Catalog # PAB27525 Size 100 ug

Applications



Western Blot (Tissue lysate)

COPA polyclonal antibody (Cat # PAB27525) (0.5ug/ml) staining of human prostate lysate (35ug protein in RIPA buffer) with (Lane: 2) and without (Lane 1) blocking with the immunizing peptide. Primary incubation was 1 hour. Detected by chemiluminescence.

Specification

| | |
|----------------------|---|
| Product Description | Goat polyclonal antibody raised against synthetic peptide of COPA. |
| Immunogen | A synthetic peptide corresponding to internal region of human COPA. |
| Sequence | CTRASNLENST |
| Host | Goat |
| Theoretical MW (kDa) | 140 |
| Reactivity | Chicken, Human, Mouse, Pig, Rat |
| Purification | Antigen affinity purification |
| Concentration | 0.5 mg/mL |
| Recommend Usage | ELISA (1:1000) Western Blot (0.5-2ug/ml) The optimal working dilution should be determined by the end user. |
| Storage Buffer | In Tris saline, pH 7.3 (0.02% sodium azide, 0.5% BSA) |

Storage Instruction

Store at -20°C.
Aliquot to avoid repeated freezing and thawing.

Note

This product contains sodium azide: a POISONOUS AND HAZARDOUS SUBSTANCE which should be handled by trained staff only.

Applications

- Western Blot (Tissue lysate)

COPA polyclonal antibody (Cat # PAB27525) (0.5ug/ml) staining of human prostate lysate (35ug protein in RIPA buffer) with (Lane: 2) and without (Lane 1) blocking with the immunizing peptide. Primary incubation was 1 hour. Detected by chemiluminescence.

Gene Info — COPA

Entrez GeneID [1314](#)

Protein Accession# [NP_001091868.1;NP_004362.2](#)

Gene Name COPA

Gene Alias FLJ26320, HEP-COP

Gene Description coatomer protein complex, subunit alpha

Omim ID [601924](#)

Gene Ontology [Hyperlink](#)

Gene Summary

In eukaryotic cells, protein transport between the endoplasmic reticulum and Golgi compartments is mediated in part by non-clathrin-coated vesicular coat proteins (COPs). Seven coat proteins have been identified, and they represent subunits of a complex known as coatomer. The subunits are designated alpha-COP, beta-COP, beta-prime-COP, gamma-COP, delta-COP, epsilon-COP, and zeta-COP. The alpha-COP, encoded by COPA, shares high sequence similarity with RET1P, the alpha subunit of the coatomer complex in yeast. Also, the N-terminal 25 amino acids of alpha-COP encode the bioactive peptide, xenin, which stimulates exocrine pancreatic secretion and may act as a gastrointestinal hormone. Alternative splicing results in multiple splice forms encoding distinct isoforms. [provided by RefSeq]

Other Designations OTTHUMP00000031846|OTTHUMP00000031847|alpha coat protein|xinin

Pathway

- [Neuroactive ligand-receptor interaction](#)