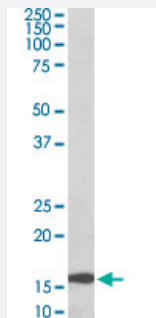


# RPL23 polyclonal antibody

Catalog # PAB27524      Size 100 ug

## Applications



### Western Blot (Tissue lysate)

RPL23 polyclonal antibody (Cat # PAB27524) (0.1ug/ml) staining of human colorectal cancer lysate (35ug protein in RIPA buffer). Primary incubation was 1 hour. Detected by chemiluminescence.

## Specification

**Product Description** Goat polyclonal antibody raised against synthetic peptide of RPL23.

**Immunogen** A synthetic peptide corresponding to C-terminus of human RPL23.

**Sequence** KECADLWPRIASN

**Host** Goat

**Theoretical MW (kDa)** 16

**Reactivity** Chicken, Human, Mouse, Pig, Rat

**Purification** Antigen affinity purification

**Concentration** 0.5 mg/mL

**Recommend Usage**  
ELISA (1:128000)  
Western Blot (0.1-0.3ug/ml)  
The optimal working dilution should be determined by the end user.

**Storage Buffer** In Tris saline, pH 7.3 (0.02% sodium azide, 0.5% BSA)

**Storage Instruction**

Store at -20°C.  
Aliquot to avoid repeated freezing and thawing.

**Note**

This product contains sodium azide: a POISONOUS AND HAZARDOUS SUBSTANCE which should be handled by trained staff only.

## Applications

- Western Blot (Tissue lysate)

RPL23 polyclonal antibody (Cat # PAB27524) (0.1ug/ml) staining of human colorectal cancer lysate (35ug protein in RIPA buffer). Primary incubation was 1 hour. Detected by chemiluminescence.

## Gene Info — RPL23

**Entrez GeneID**[9349](#)**Protein Accession#**[NP\\_000969.1](#)**Gene Name**

RPL23

**Gene Alias**

MGC111167, MGC117346, MGC72008, rpL17

**Gene Description**

ribosomal protein L23

**Omim ID**[603662](#)**Gene Ontology**[Hyperlink](#)**Gene Summary**

Ribosomes, the organelles that catalyze protein synthesis, consist of a small 40S subunit and a large 60S subunit. Together these subunits are composed of 4 RNA species and approximately 80 structurally distinct proteins. This gene encodes a ribosomal protein that is a component of the 60S subunit. The protein belongs to the L14P family of ribosomal proteins. It is located in the cytoplasm. This gene has been referred to as rpL17 because the encoded protein shares amino acid identity with ribosomal protein L17 from *Saccharomyces cerevisiae*; however, its official symbol is RPL23. As is typical for genes encoding ribosomal proteins, there are multiple processed pseudogenes of this gene dispersed through the genome. [provided by RefSeq]

**Other Designations**

60S ribosomal protein L23|OTTHUMP00000164153

## Pathway

- [Ribosome](#)