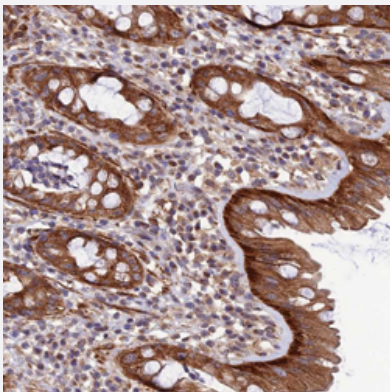


LEKR1 polyclonal antibody

Catalog # PAB27520 Size 100 uL

Applications



Immunohistochemistry (Formalin/PFA-fixed paraffin-embedded sections)

Immunohistochemical staining of human rectum with LEKR1 polyclonal antibody (Cat # PAB27520) shows strong cytoplasmic positivity in glandular cells at 1:1000-1:2500 dilution.

Specification

Product Description	Rabbit polyclonal antibody raised against recombinant LEKR1.
Immunogen	Recombinant protein corresponding to amino acids of human LEKR1.
Sequence	KLHKSHIRYTEESNSKEKEIENLKNLVAEFESRLKKEIDSNDSVSENLRKEMEQKSDELKRVMLAQ TQLIEQFNQSQEENTFLQETVRRECEERFEL
Host	Rabbit
Reactivity	Human
Form	Liquid
Purification	Antigen affinity purification
Isotype	IgG
Recommend Usage	Immunohistochemistry (1:1000-1:2500) The optimal working dilution should be determined by the end user.
Storage Buffer	In PBS, pH 7.2 (40% glycerol, 0.02% sodium azide)

Storage Instruction

Store at 4°C. For long term storage store at -20°C.
Aliquot to avoid repeated freezing and thawing.

Note

This product contains sodium azide: a POISONOUS AND HAZARDOUS SUBSTANCE which should be handled by trained staff only.

Applications

- Immunohistochemistry (Formalin/PFA-fixed paraffin-embedded sections)

Immunohistochemical staining of human rectum with LEKR1 polyclonal antibody (Cat # PAB27520) shows strong cytoplasmic positivity in glandular cells at 1:1000-1:2500 dilution.

Gene Info — LEKR1

Entrez GeneID[389170](#)**Gene Name**

LEKR1

Gene Alias

FLJ16641, FLJ37161

Gene Description

leucine, glutamate and lysine rich 1

Gene Ontology[Hyperlink](#)**Gene Summary**

O

Other Designations

-