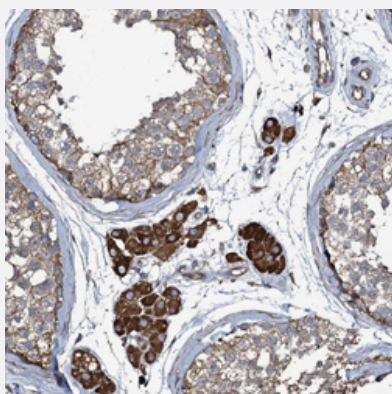


WIPF3 polyclonal antibody

Catalog # PAB27515 Size 100 uL

Applications



Immunohistochemistry (Formalin/PFA-fixed paraffin-embedded sections)

Immunohistochemical staining of human testis with WIPF3 polyclonal antibody (Cat # PAB27515) shows moderate cytoplasmic positivity in cells in seminiferous ducts and strong staining in Leydig cells at 1:50-1:200 dilution.

Specification

Product Description	Rabbit polyclonal antibody raised against recombinant WIPF3.
Immunogen	Recombinant protein corresponding to amino acids of human WIPF3.
Sequence	ELSSKSQQATAWTP TQQPGGQLRNGSLHIIDDFESKFTFH SVEDFPPPDEYKPCQKIYPS
Host	Rabbit
Reactivity	Human
Form	Liquid
Purification	Antigen affinity purification
Isotype	IgG
Recommend Usage	Immunohistochemistry (1:50-1:200) The optimal working dilution should be determined by the end user.
Storage Buffer	In PBS, pH 7.2 (40% glycerol, 0.02% sodium azide)

Storage Instruction

Store at 4°C. For long term storage store at -20°C.
Aliquot to avoid repeated freezing and thawing.

Note

This product contains sodium azide: a POISONOUS AND HAZARDOUS SUBSTANCE which should be handled by trained staff only.

Applications

- Immunohistochemistry (Formalin/PFA-fixed paraffin-embedded sections)

Immunohistochemical staining of human testis with WIPF3 polyclonal antibody (Cat # PAB27515) shows moderate cytoplasmic positivity in cells in seminiferous ducts and strong staining in Leydig cells at 1:50-1:200 dilution.

Gene Info — WIPF3

Entrez GeneID[644150](#)**Gene Name**

WIPF3

Gene Alias

CR16, FLJ36931

Gene Description

WAS/WASL interacting protein family, member 3

Gene Ontology[Hyperlink](#)**Gene Summary**

O

Other Designations

Corticosteroids and regional expression protein 16 homolog|WAS/WASL-interacting protein family member 3