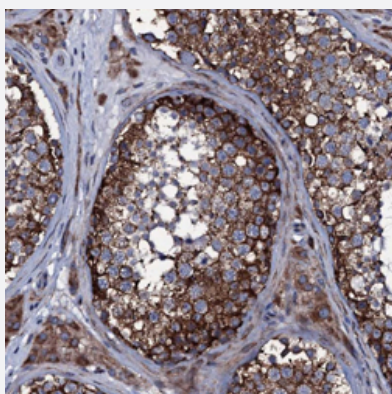


WIPF3 polyclonal antibody

Catalog # PAB27513 Size 100 uL

Applications



Immunohistochemistry (Formalin/PFA-fixed paraffin-embedded sections)

Immunohistochemical staining of human testis with WIPF3 polyclonal antibody (Cat # PAB27513) shows strong granular cytoplasmic positivity in cells in seminiferous ducts at 1:500-1:1000 dilution.

Specification

Product Description	Rabbit polyclonal antibody raised against recombinant WIPF3.
Immunogen	Recombinant protein corresponding to amino acids of human WIPF3.
Sequence	QIESSKGTNKEGGGSANTRGASTPPTLGDLFAGGFVLRPAGQRDVAGGKTGQGPGSRAPSPRLPNKTISGPLIPPASPRLGNTS
Host	Rabbit
Reactivity	Human
Form	Liquid
Purification	Antigen affinity purification
Isotype	IgG
Recommend Usage	Immunohistochemistry (1:500-1:1000) The optimal working dilution should be determined by the end user.
Storage Buffer	In PBS, pH 7.2, (40% glycerol, 0.02% sodium azide)

Storage Instruction

Store at 4°C. For long term storage store at -20°C.
Aliquot to avoid repeated freezing and thawing.

Note

This product contains sodium azide: a POISONOUS AND HAZARDOUS SUBSTANCE which should be handled by trained staff only.

Applications

- Immunohistochemistry (Formalin/PFA-fixed paraffin-embedded sections)

Immunohistochemical staining of human testis with WIPF3 polyclonal antibody (Cat # PAB27513) shows strong granular cytoplasmic positivity in cells in seminiferous ducts at 1:500-1:1000 dilution.

Gene Info — WIPF3

Entrez GeneID[644150](#)**Gene Name**

WIPF3

Gene Alias

CR16, FLJ36931

Gene Description

WAS/WASL interacting protein family, member 3

Gene Ontology[Hyperlink](#)**Gene Summary**

O

Other Designations

Corticosteroids and regional expression protein 16 homolog|WAS/WASL-interacting protein family member 3