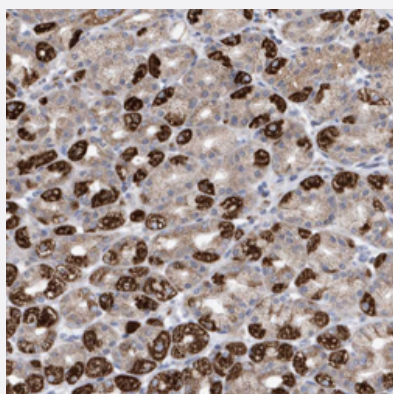


METTL8 polyclonal antibody

Catalog # PAB27501 Size 100 uL

Applications



Immunohistochemistry (Formalin/PFA-fixed paraffin-embedded sections)

Immunohistochemical staining of human stomach with METTL8 polyclonal antibody (Cat # PAB27501) shows strong cytoplasmic positivity in parietal cells.

Specification

Product Description	Rabbit polyclonal antibody raised against recombinant METTL8.
Immunogen	Recombinant protein corresponding to amino acids of human METTL8.
Sequence	MNMMWRNSISCLRLGKVPHPYQSGYHPVAPLGSRLTDPKVF EHNMW D HMQWSKEEEAAARK KVKENSAVRV LLEE
Host	Rabbit
Reactivity	Human
Form	Liquid
Purification	Antigen affinity purification
Isotype	IgG
Recommend Usage	Immunohistochemistry (1:200-1:500) The optimal working dilution should be determined by the end user.
Storage Buffer	In PBS, pH 7.2, (40% glycerol, 0.02% sodium azide)

Storage Instruction

Store at 4°C. For long term storage store at -20°C.
Aliquot to avoid repeated freezing and thawing.

Note

This product contains sodium azide: a POISONOUS AND HAZARDOUS SUBSTANCE which should be handled by trained staff only.

Applications

- Immunohistochemistry (Formalin/PFA-fixed paraffin-embedded sections)

Immunohistochemical staining of human stomach with METTL8 polyclonal antibody (Cat # PAB27501) shows strong cytoplasmic positivity in parietal cells.

Gene Info — METTL8

Entrez GeneID[79828](#)**Gene Name**

METTL8

Gene Alias

FLJ13334, FLJ13984, FLJ31054, FLJ42098, FLJ77788, TIP

Gene Description

methyltransferase like 8

Omim ID[609525](#)**Gene Ontology**[Hyperlink](#)**Other Designations**

OTTHUMP00000163095|tension-induced/inhibited protein