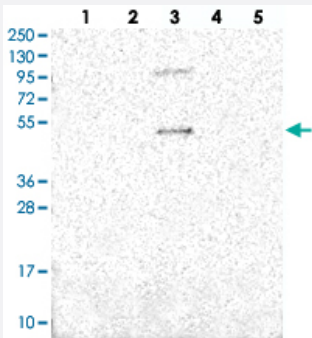


SLC10A5 polyclonal antibody

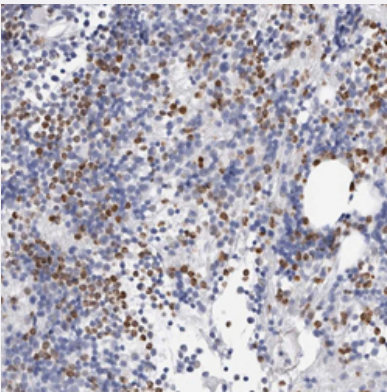
Catalog # PAB27487 Size 100 uL

Applications



Western Blot

Western blot analysis of Lane 1: RT-4, Lane 2: U-251 MG, Lane 3: Human Plasma, Lane 4: Liver, Lane 5: Tonsil with SLC10A5 polyclonal antibody (Cat # PAB27487).



Immunohistochemistry (Formalin/PFA-fixed paraffin-embedded sections)

Immunohistochemical staining of human bone marrow with SLC10A5 polyclonal antibody (Cat # PAB27487) shows distinct nuclear and cytoplasmic positivity in subsets of bone marrow poietic cells.

Specification

Product Description	Rabbit polyclonal antibody raised against recombinant SLC10A5.
Immunogen	Recombinant protein corresponding to amino acids of human SLC10A5.
Sequence	GETNVTIQLWDSEGRQERLIEEIKNVKVKVLKQKDSLLQAPMHIDRNILMLILPLILLNKCAFGCKIEL
Host	Rabbit
Reactivity	Human
Form	Liquid

Purification	Antigen affinity purification
Isotype	IgG
Recommend Usage	Immunohistochemistry (1:50-1:200) Western Blot (1:100-1:250) The optimal working dilution should be determined by the end user.
Storage Buffer	In PBS, pH 7.2, (40% glycerol, 0.02% sodium azide)
Storage Instruction	Store at 4°C. For long term storage store at -20°C. Aliquot to avoid repeated freezing and thawing.
Note	This product contains sodium azide: a POISONOUS AND HAZARDOUS SUBSTANCE which should be handled by trained staff only.

Applications

- Western Blot

Western blot analysis of Lane 1: RT-4, Lane 2: U-251 MG, Lane 3: Human Plasma, Lane 4: Liver, Lane 5: Tonsil with SLC10A5 polyclonal antibody (Cat # PAB27487).

- Immunohistochemistry (Formalin/PFA-fixed paraffin-embedded sections)

Immunohistochemical staining of human bone marrow with SLC10A5 polyclonal antibody (Cat # PAB27487) shows distinct nuclear and cytoplasmic positivity in subsets of bone marrow poietic cells.

Gene Info — SLC10A5

Entrez GeneID	347051
Gene Name	SLC10A5
Gene Alias	P5
Gene Description	solute carrier family 10 (sodium/bile acid cotransporter family), member 5
Gene Ontology	Hyperlink
Gene Summary	O
Other Designations	-