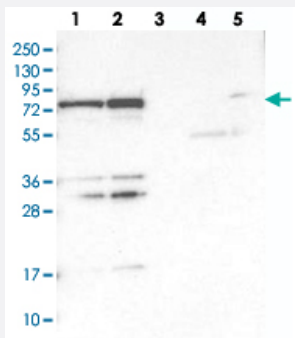


# PTCD1 polyclonal antibody

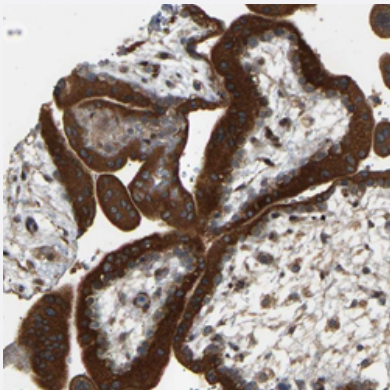
Catalog # PAB27476      Size 100 uL

## Applications



### Western Blot

Western blot analysis of Lane 1: RT-4, Lane 2: U-251 MG, Lane 3: Human Plasma, Lane 4: Liver, Lane 5: Tonsil with PTCD1 polyclonal antibody (Cat # PAB27476).



### Immunohistochemistry (Formalin/PFA-fixed paraffin-embedded sections)

Immunohistochemical staining of human placenta with PTCD1 polyclonal antibody (Cat # PAB27476) shows strong cytoplasmic positivity in trophoblastic cells.

## Specification

Product Description	Rabbit polyclonal antibody raised against recombinant PTCD1.
Immunogen	Recombinant protein corresponding to amino acids of human PTCD1.
Sequence	PVELEVNLLTPGAVPPTVVSFGTVTPADRLALIGGLEGFLSKMAEHRQQPDIRLTLLAEVVESG SPAESLLLALLDEHQVEADLTFFNTLVRKSKLGDLE
Host	Rabbit
Reactivity	Human

Form	Liquid
Purification	Antigen affinity purification
Isotype	IgG
Recommend Usage	Immunohistochemistry (1:50-1:200) Western Blot (1:100-1:250) The optimal working dilution should be determined by the end user.
Storage Buffer	In PBS, pH 7.2, (40% glycerol, 0.02% sodium azide)
Storage Instruction	Store at 4°C. For long term storage store at -20°C. Aliquot to avoid repeated freezing and thawing.
Note	This product contains sodium azide: a POISONOUS AND HAZARDOUS SUBSTANCE which should be handled by trained staff only.

## Applications

- Western Blot

Western blot analysis of Lane 1: RT-4, Lane 2: U-251 MG, Lane 3: Human Plasma, Lane 4: Liver, Lane 5: Tonsil with PTCD1 polyclonal antibody (Cat # PAB27476).

- Immunohistochemistry (Formalin/PFA-fixed paraffin-embedded sections)

Immunohistochemical staining of human placenta with PTCD1 polyclonal antibody (Cat # PAB27476) shows strong cytoplasmic positivity in trophoblastic cells.

## Gene Info — PTCD1

Entrez GeneID	<a href="#">26024</a>
Gene Name	PTCD1
Gene Alias	KIAA0632
Gene Description	pentatricopeptide repeat domain 1
Gene Ontology	<a href="#">Hyperlink</a>
Other Designations	-