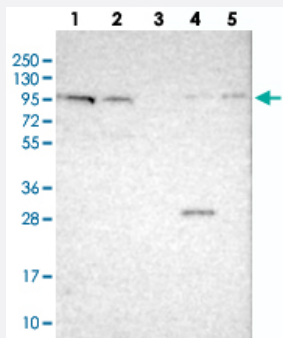


CDH26 polyclonal antibody

Catalog # PAB27470

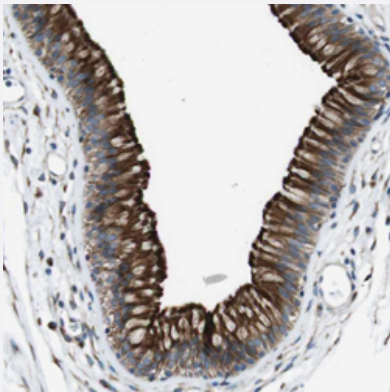
Size 100 uL

Applications



Western Blot

Western blot analysis of Lane 1: RT-4, Lane 2: U-251 MG, Lane 3: Human Plasma, Lane 4: Liver, Lane 5: Tonsil with CDH26 polyclonal antibody (Cat # PAB27470).



Immunohistochemistry (Formalin/PFA-fixed paraffin-embedded sections)

Immunohistochemical staining of human nasopharynx with CDH26 polyclonal antibody (Cat # PAB27470) shows strong membranous and cytoplasmic positivity in respiratory epithelial cells.

Specification

Product Description	Rabbit polyclonal antibody raised against recombinant CDH26.
Immunogen	Recombinant protein corresponding to amino acids of human CDH26.
Sequence	VIIHAVDDGFPPQTATGTLMLFLSDINDNVPTLRPRSRMEVCESAVHEPLHIEAEDPDLEPFSDP FTFELDNTWGN AEDTWKLGRNWGQSVELLTLRSLPRGNYLVPLFIGDKQGLSQKQTVHVRICPC ASGLTCVELADAEVGL
Host	Rabbit
Reactivity	Human

Form	Liquid
Purification	Antigen affinity purification
Isotype	IgG
Recommend Usage	Immunohistochemistry (1:50-1:200) Western Blot (1:250-1:500) The optimal working dilution should be determined by the end user.
Storage Buffer	In PBS, pH 7.2, (40% glycerol, 0.02% sodium azide)
Storage Instruction	Store at 4°C. For long term storage store at -20°C. Aliquot to avoid repeated freezing and thawing.
Note	This product contains sodium azide: a POISONOUS AND HAZARDOUS SUBSTANCE which should be handled by trained staff only.

Applications

- Western Blot

Western blot analysis of Lane 1: RT-4, Lane 2: U-251 MG, Lane 3: Human Plasma, Lane 4: Liver, Lane 5: Tonsil with CDH26 polyclonal antibody (Cat # PAB27470).

- Immunohistochemistry (Formalin/PFA-fixed paraffin-embedded sections)

Immunohistochemical staining of human nasopharynx with CDH26 polyclonal antibody (Cat # PAB27470) shows strong membranous and cytoplasmic positivity in respiratory epithelial cells.

Gene Info — CDH26

Entrez GeneID	60437
Gene Name	CDH26
Gene Alias	VR20
Gene Description	cadherin-like 26
Gene Ontology	Hyperlink

Gene Summary

Cadherins are a family of adhesion molecules that mediate Ca²⁺-dependent cell-cell adhesion in all solid tissues and modulate a wide variety of processes, including cell polarization and migration. Cadherin domains occur as repeats in the extracellular region and are thought to contribute to the sorting of heterogeneous cell types and the maintenance of orderly structures such as epithelium. This gene encodes a cadherin domain-containing protein whose specific function has not yet been determined. Alternative splicing occurs at this locus and two transcript variants, encoding distinct proteins, have been identified. [provided by RefSeq]

Other Designations

cadherin-like protein VR20

Disease

- [Asthma](#)
- [Genetic Predisposition to Disease](#)
- [Hypersensitivity](#)
- [Tobacco Use Disorder](#)