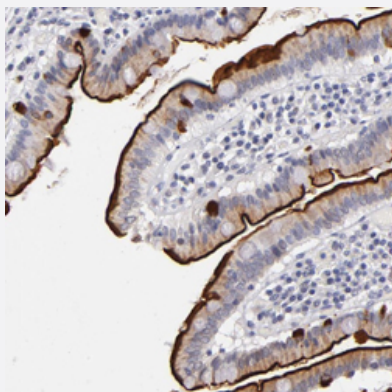


# MGAM polyclonal antibody

Catalog # PAB27460      Size 100 uL

## Applications



### Immunohistochemistry (Formalin/PFA-fixed paraffin-embedded sections)

Immunohistochemical staining of human duodenum with MGAM polyclonal antibody (Cat # PAB27460) shows strong membranous and moderate cytoplasmic positivity in glandular cells.

## Specification

Product Description	Rabbit polyclonal antibody raised against recombinant MGAM.
Immunogen	Recombinant protein corresponding to amino acids of human MGAM.
Sequence	VYLLCEFSVTQNRLEVNISQSTYKDPNNLAFNEIKILGTEEPSNVTVKHNGVPSQTSPTVTYDSNLK VAITDIDLLLGEAYTVEWSIKIRDEEKIDCYPDENGASAENCTARGCWEASNSSGVP
Host	Rabbit
Reactivity	Human
Form	Liquid
Purification	Antigen affinity purification
Isotype	IgG
Recommend Usage	Immunohistochemistry (1:1000-1:2500) The optimal working dilution should be determined by the end user.
Storage Buffer	In PBS, pH 7.2, (40% glycerol, 0.02% sodium azide)

**Storage Instruction**

Store at 4°C. For long term storage store at -20°C.  
Aliquot to avoid repeated freezing and thawing.

**Note**

This product contains sodium azide: a POISONOUS AND HAZARDOUS SUBSTANCE which should be handled by trained staff only.

## Applications

- Immunohistochemistry (Formalin/PFA-fixed paraffin-embedded sections)

Immunohistochemical staining of human duodenum with MGAM polyclonal antibody (Cat # PAB27460) shows strong membranous and moderate cytoplasmic positivity in glandular cells.

## Gene Info — MGAM

**Entrez GeneID**[8972](#)**Gene Name**

MGAM

**Gene Alias**

MG, MGA

**Gene Description**

maltase-glucoamylase (alpha-glucosidase)

**Omim ID**[154360](#)**Gene Ontology**[Hyperlink](#)**Gene Summary**

This gene encodes maltase-glucoamylase, which is a brush border membrane enzyme that plays a role in the final steps of digestion of starch. The protein has two catalytic sites identical to those of sucrase-isomaltase, but the proteins are only 59% homologous. Both are members of glycosyl hydrolase family 31, which has a variety of substrate specificities. [provided by RefSeq]

**Other Designations**

alpha-glucosidase|brush border hydrolase|maltase-glucoamylase

## Pathway

- [Galactose metabolism](#)
- [Metabolic pathways](#)
- [Starch and sucrose metabolism](#)

## Disease

- [Cardiovascular Diseases](#)
- [Diabetes Mellitus](#)
- [Edema](#)