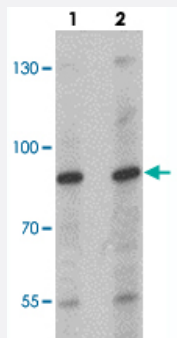


NCBP1 polyclonal antibody

Catalog # PAB27446 Size 100 ug

Applications



Western Blot (Cell lysate)

Western blot analysis of NCBP1 in HeLa cell lysate with NCBP1 polyclonal antibody (Cat # PAB27446) at (lane 1) 1 and (lane 2) 2 ug/mL.

Specification

| | |
|----------------------------|---|
| Product Description | Rabbit polyclonal antibody raised against synthetic peptide of NCBP1. |
| Immunogen | A synthetic peptide corresponding to 17 amino acids at internal region of human NCBP1. |
| Host | Rabbit |
| Reactivity | Human, Mouse, Rat |
| Specificity | NCBP1 antibody is human, mouse and rat reactive. At least two isoforms of NCBP1 are known to exist; this antibody will detect both isoforms of NCBP1. |
| Form | Liquid |
| Purification | Peptide affinity purification |
| Concentration | 1 mg/mL |
| Isotype | IgG |
| Recommend Usage | Western Blot (1-2 ug/mL) Immunocytochemistry (2.5 ug/mL) The optimal working dilution should be determined by the end user. |

| | |
|---------------------|---|
| Storage Buffer | In PBS (0.02% sodium azide) |
| Storage Instruction | Store at 4°C for three months. For long term storage store at -20°C. Aliquot to avoid repeated freezing and thawing. |
| Note | This product contains sodium azide: a POISONOUS AND HAZARDOUS SUBSTANCE which should be handled by trained staff only. |

Applications

- Western Blot (Cell lysate)

Western blot analysis of NCBP1 in HeLa cell lysate with NCBP1 polyclonal antibody (Cat # PAB27446) at (lane 1) 1 and (lane 2) 2 ug/mL.

- Immunocytochemistry

- Enzyme-linked Immunoabsorbent Assay

Gene Info — NCBP1

| | |
|--------------------|--|
| Entrez GeneID | 4686 |
| Protein Accession# | NP_002477 |
| Gene Name | NCBP1 |
| Gene Alias | CBP80, MGC2087, NCBP |
| Gene Description | nuclear cap binding protein subunit 1, 80kDa |
| Omim ID | 600469 |
| Gene Ontology | Hyperlink |
| Gene Summary | The product of this gene is a component of the nuclear cap-binding protein complex (CBC), which binds to the monomethylated 5' cap of nascent pre-mRNA in the nucleoplasm. The encoded protein promotes high-affinity mRNA-cap binding and associates with the CTD of RNA polymerase II. The CBC promotes pre-mRNA splicing, 3'-end processing, RNA nuclear export, and nonsense-mediated mRNA decay. [provided by RefSeq] |
| Other Designations | OTTHUMP00000021753 |