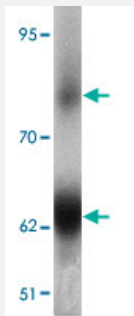


GOLGA5 polyclonal antibody

Catalog # PAB27442

Size 100 ug

Applications



Western Blot (Tissue lysate)

Western blot analysis of GOLGA5 in human testis tissue with GOLGA5 polyclonal antibody (Cat # PAB27442) at 1 ug/mL.

Specification

Product Description	Rabbit polyclonal antibody raised against synthetic peptide of GOLGA5.
Immunogen	A synthetic peptide corresponding to 18 amino acids at C-terminus of human GOLGA5.
Host	Rabbit
Reactivity	Human, Mouse, Rat
Specificity	GOLGA5 antibody is human, mouse and rat reactive. Two isoforms of GOLGA5 exist due to alternative splicing events.
Form	Liquid
Purification	Peptide affinity purification
Concentration	1 mg/mL
Isotype	IgG
Recommend Usage	Western Blot (1-2 ug/mL) The optimal working dilution should be determined by the end user.
Storage Buffer	In PBS (0.02% sodium azide)

Storage Instruction

Store at 4°C for three months. For long term storage store at -20°C.
Aliquot to avoid repeated freezing and thawing.

Note

This product contains sodium azide: a POISONOUS AND HAZARDOUS SUBSTANCE which should be handled by trained staff only.

Applications

- Western Blot (Tissue lysate)

Western blot analysis of GOLGA5 in human testis tissue with GOLGA5 polyclonal antibody (Cat # PAB27442) at 1 ug/mL.

- Enzyme-linked Immunoabsorbent Assay

Gene Info — GOLGA5

Entrez GeneID [9950](#)

Protein Accession# [NP_005104](#)

Gene Name GOLGA5

Gene Alias GOLIM5, RFG5, ret-II

Gene Description golgi autoantigen, golgin subfamily a, 5

Omim ID [188550 606918](#)

Gene Ontology [Hyperlink](#)

Gene Summary

The Golgi apparatus, which participates in glycosylation and transport of proteins and lipids in the secretory pathway, consists of a series of stacked cisternae (flattened membrane sacs). Interactions between the Golgi and microtubules are thought to be important for the reorganization of the Golgi after it fragments during mitosis. This gene encodes a member of the golgin family of proteins, whose members localize to the Golgi. This protein is a coiled-coil membrane protein that has been postulated to play a role in vesicle tethering and docking. Translocations involving this gene and the ret proto-oncogene have been found in tumor tissues; the chimeric sequences have been designated RET-II and PTC5. [provided by RefSeq]

Other Designations

Golgi autoantigen, golgin subfamily a, 5|cell proliferation-inducing gene 31|golgi integral membrane protein 5|golgin-84|ret-fused gene 5