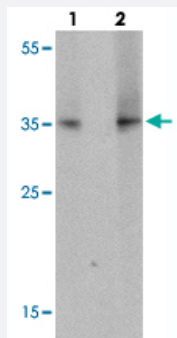


# TLX1 polyclonal antibody

Catalog # PAB27431      Size 100 ug

## Applications



### Western Blot (Tissue lysate)

Western blot analysis of TLX1 in mouse spleen tissue with TLX1 polyclonal antibody (Cat # PAB27431) at (lane 1) 1 ug/mL and (lane 2) 2 ug/mL.

## Specification

<b>Product Description</b>	Rabbit polyclonal antibody raised against synthetic peptide of TLX1.
<b>Immunogen</b>	A synthetic peptide corresponding to 16 amino acids at N-terminus of human TLX1.
<b>Host</b>	Rabbit
<b>Reactivity</b>	Human, Mouse, Rat
<b>Specificity</b>	Multiple isoforms of TLX1 exist due to alternative splicing events. TLX1 antibody is predicted to not cross-react with other TLX proteins.
<b>Form</b>	Liquid
<b>Purification</b>	Peptide affinity purification
<b>Concentration</b>	1 mg/mL
<b>Isotype</b>	IgG
<b>Recommend Usage</b>	Western Blot (1-2 ug/mL) Immunohistochemistry (2.5 ug/mL) The optimal working dilution should be determined by the end user.

Storage Buffer	In PBS (0.02% sodium azide)
Storage Instruction	Store at 4°C for three months. For long term storage store at -20°C. Aliquot to avoid repeated freezing and thawing.
Note	This product contains sodium azide: a POISONOUS AND HAZARDOUS SUBSTANCE which should be handled by trained staff only.

## Applications

- Western Blot (Tissue lysate)

Western blot analysis of TLX1 in mouse spleen tissue with TLX1 polyclonal antibody (Cat # PAB27431) at (lane 1) 1 ug/mL and (lane 2) 2 ug/mL.

- Immunohistochemistry

- Enzyme-linked Immunoabsorbent Assay

## Gene Info — TLX1

Entrez GeneID	<a href="#">3195</a>
Protein Accession#	<a href="#">NP_005512</a>
Gene Name	TLX1
Gene Alias	HOX11, MGC163402, TCL3
Gene Description	T-cell leukemia homeobox 1
Omim ID	<a href="#">186770</a>
Gene Ontology	<a href="#">Hyperlink</a>
Gene Summary	homologous to Drosophila Notch) OTTHUMP00000020816 T-cell leukemia
Other Designations	Homeo box-11 (T-cell leukemia-3 associated breakpoint, homologous to Drosophila Notch) OTT HUMP00000020816 T-cell leukemia, homeobox 1 homeo box 11 (T-cell lymphoma 3-associated breakpoint)