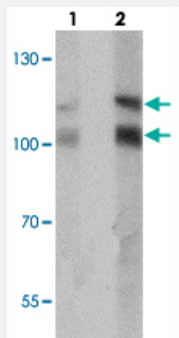


RNF20 polyclonal antibody

Catalog # PAB27430 Size 100 ug

Applications



Western Blot (Tissue lysate)

Western blot analysis of RNF20 in human liver tissue with RNF20 polyclonal antibody (Cat # PAB27430) at (lane 1) 1 and (lane 2) 2 ug/mL.

Specification

Product Description	Rabbit polyclonal antibody raised against synthetic peptide of RNF20.
Immunogen	A synthetic peptide corresponding to 19 amino acids at N-terminus of human RNF20.
Host	Rabbit
Reactivity	Human, Mouse
Specificity	Multiple isoforms of RNF20 are known to exist.
Form	Liquid
Purification	Peptide affinity purification
Concentration	1 mg/mL
Isotype	IgG
Recommend Usage	Western Blot (1-2 ug/mL) Immunohistochemistry (2.5 ug/mL) Immunofluorescence (20 ug/mL) The optimal working dilution should be determined by the end user.

Storage Buffer	In PBS (0.02% sodium azide)
Storage Instruction	Store at 4°C for three months. For long term storage store at -20°C. Aliquot to avoid repeated freezing and thawing.
Note	This product contains sodium azide: a POISONOUS AND HAZARDOUS SUBSTANCE which should be handled by trained staff only.

Applications

- Western Blot (Tissue lysate)

Western blot analysis of RNF20 in human liver tissue with RNF20 polyclonal antibody (Cat # PAB27430) at (lane 1) 1 and (lane 2) 2 ug/mL.

- Immunohistochemistry

- Immunofluorescence

- Enzyme-linked Immunoabsorbent Assay

Gene Info — RNF20

Entrez GeneID	56254
Protein Accession#	NP_062538
Gene Name	RNF20
Gene Alias	BRE1, BRE1A, FLJ11189, FLJ20382, KIAA2779, MGC129667, MGC129668, hBRE1
Gene Description	ring finger protein 20
Omim ID	607699
Gene Ontology	Hyperlink
Gene Summary	The protein encoded by this gene shares similarity with BRE1 of <i>S. cerevisiae</i> . Yeast BRE1 is a ubiquitin ligase required for the ubiquitination of histone H2B and the methylation of histone H3. [provided by RefSeq]
Other Designations	BRE1 E3 ubiquitin ligase homolog homolog of <i>S. cerevisiae</i> BRE1