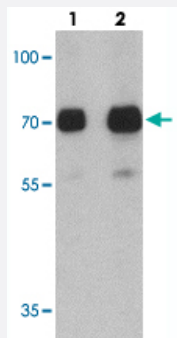


CRTC2 polyclonal antibody

Catalog # PAB27424 Size 100 ug

Applications



Western Blot (Tissue lysate)

Western blot analysis of CRTC2 in human small intestine tissue with CRTC2 polyclonal antibody (Cat # PAB27424) at (lane 1) 0.5 and (lane 2) 1 ug/mL.

Specification

Product Description	Rabbit polyclonal antibody raised against synthetic peptide of CRTC2.
Immunogen	A synthetic peptide corresponding to 16 amino acids at C-terminus of human CRTC2.
Host	Rabbit
Reactivity	Human, Mouse, Rat
Specificity	Multiple isoforms of CRTC2 are known to exist. CRTC2 antibody is predicted to not cross-react with CRTC1.
Form	Liquid
Purification	Peptide affinity purification
Concentration	1 mg/mL
Isotype	IgG
Recommend Usage	Western Blot (1-2 ug/mL) Immunohistochemistry (2.5 ug/mL) Immunofluorescence (20 ug/mL) The optimal working dilution should be determined by the end user.

Storage Buffer	In PBS (0.02% sodium azide)
Storage Instruction	Store at 4°C for three months. For long term storage store at -20°C. Aliquot to avoid repeated freezing and thawing.
Note	This product contains sodium azide: a POISONOUS AND HAZARDOUS SUBSTANCE which should be handled by trained staff only.

Applications

- Western Blot (Tissue lysate)

Western blot analysis of CRTC2 in human small intestine tissue with CRTC2 polyclonal antibody (Cat # PAB27424) at (lane 1) 0.5 and (lane 2) 1 ug/mL.

- Immunohistochemistry
- Immunofluorescence
- Enzyme-linked Immunoabsorbent Assay

Gene Info — CRTC2

Entrez GeneID	200186
Protein Accession#	NP_859066
Gene Name	CRTC2
Gene Alias	RP11-422P24.6, TORC2
Gene Description	CREB regulated transcription coactivator 2
Omim ID	608972
Gene Ontology	Hyperlink
Other Designations	transducer of regulated cAMP response element-binding protein (CREB) 2

Disease

- [Diabetes Mellitus](#)

- [Disease Progression](#)
- [Disease Susceptibility](#)
- [Genetic Predisposition to Disease](#)
- [HIV Infections](#)