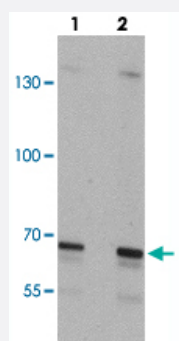


# SLC27A6 polyclonal antibody

Catalog # PAB27421      Size 100 ug

## Applications



### Western Blot (Cell lysate)

Western blot analysis of SLC27A6 in A-20 cell lysate with SLC27A6 polyclonal antibody (Cat # PAB27421) at (lane 1) 1 and (lane 2) 2 ug/mL.

## Specification

<b>Product Description</b>	Rabbit polyclonal antibody raised against synthetic peptide of SLC27A6.
<b>Immunogen</b>	A synthetic peptide corresponding to 16 amino acids at N-terminus of human SLC27A6.
<b>Host</b>	Rabbit
<b>Reactivity</b>	Human, Mouse, Rat
<b>Specificity</b>	SLC27A6 antibody is predicted to not cross-react with other SLC27 protein family members.
<b>Form</b>	Liquid
<b>Purification</b>	Peptide affinity purification
<b>Concentration</b>	1 mg/mL
<b>Isotype</b>	IgG
<b>Recommend Usage</b>	Western Blot (1-2 ug/mL) The optimal working dilution should be determined by the end user.
<b>Storage Buffer</b>	In PBS (0.02% sodium azide)

**Storage Instruction**

Store at 4°C for three months. For long term storage store at -20°C.  
Aliquot to avoid repeated freezing and thawing.

**Note**

This product contains sodium azide: a POISONOUS AND HAZARDOUS SUBSTANCE which should be handled by trained staff only.

## Applications

- Western Blot (Cell lysate)

Western blot analysis of SLC27A6 in A-20 cell lysate with SLC27A6 polyclonal antibody (Cat # PAB27421) at (lane 1) 1 and (lane 2) 2 ug/mL.

- Enzyme-linked Immunoabsorbent Assay

## Gene Info — SLC27A6

**Entrez GeneID**[28965](#)**Protein Accession#**[NP\\_054750](#)**Gene Name**

SLC27A6

**Gene Alias**

ACSVL2, DKFZp779M0564, FACVL2, FATP6, VLCS-H1

**Gene Description**

solute carrier family 27 (fatty acid transporter), member 6

**Omim ID**[604196](#)**Gene Ontology**[Hyperlink](#)**Gene Summary**

This gene encodes a member of the fatty acid transport protein family (FATP). FATPs are involved in the uptake of long-chain fatty acids and have unique expression patterns. Alternatively spliced transcript variants encoding the same protein have been found for this gene. [provided by RefSeq]

**Other Designations**

fatty-acid-Coenzyme A ligase, very long-chain 2|very long-chain acyl-CoA synthetase homolog 1

## Pathway

- [PPAR signaling pathway](#)