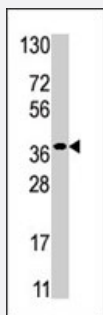


# RBKS polyclonal antibody

Catalog # PAB2742

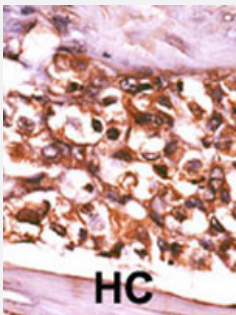
Size 400 uL

## Applications



### Western Blot (Cell lysate)

Western blot analysis of RBKS polyclonal antibody (Cat # PAB2742) in HepG2 cell line lysate (35 ug/lane). RBSK (arrow) was detected using the purified polyclonal antibody.



### Immunohistochemistry (Formalin/PFA-fixed paraffin-embedded sections)

Formalin-fixed and paraffin-embedded human hepatocellular carcinoma tissue reacted with RBKS polyclonal antibody (Cat # PAB2742), which was peroxidase-conjugated to the secondary antibody, followed by AEC staining. This data demonstrates the use of this antibody for immunohistochemistry; clinical relevance has not been evaluated. HC = hepatocarcinoma.

## Specification

<b>Product Description</b>	Rabbit polyclonal antibody raised against synthetic peptide of RBKS.
<b>Immunogen</b>	A synthetic peptide (conjugated with KLH) corresponding to N-terminus of human RBKS.
<b>Host</b>	Rabbit
<b>Reactivity</b>	Human
<b>Form</b>	Liquid
<b>Purification</b>	Protein G purification

<b>Recommend Usage</b>	Western Blot (1:1000) Immunohistochemistry (1:50-100) The optimal working dilution should be determined by the end user.
<b>Storage Buffer</b>	In PBS (0.09% sodium azide)
<b>Storage Instruction</b>	Store at 4°C. For long term storage store at -20°C. Aliquot to avoid repeated freezing and thawing.
<b>Note</b>	This product contains sodium azide: a POISONOUS AND HAZARDOUS SUBSTANCE which should be handled by trained staff only.

## Applications

- Western Blot (Cell lysate)

Western blot analysis of RBKS polyclonal antibody (Cat # PAB2742) in HepG2 cell line lysate (35 ug/lane). RBKS (arrow) was detected using the purified polyclonal antibody.

- Immunohistochemistry (Formalin/PFA-fixed paraffin-embedded sections)

Formalin-fixed and paraffin-embedded human hepatocellular carcinoma tissue reacted with RBKS polyclonal antibody (Cat # PAB2742), which was peroxidase-conjugated to the secondary antibody, followed by AEC staining. This data demonstrates the use of this antibody for immunohistochemistry; clinical relevance has not been evaluated. HC = hepatocarcinoma.

## Gene Info — RBKS

<b>Entrez GeneID</b>	<a href="#">64080</a>
<b>Protein Accession#</b>	<a href="#">NP_071411;Q9H477</a>
<b>Gene Name</b>	RBKS
<b>Gene Alias</b>	DKFZp686G13268, RBSK
<b>Gene Description</b>	ribokinase
<b>Omim ID</b>	<a href="#">611132</a>
<b>Gene Ontology</b>	<a href="#">Hyperlink</a>
<b>Gene Summary</b>	The ribokinase encoded by this gene belongs to the pfkB family of carbohydrate kinases. It phosphorylates ribose to form ribose-5-phosphate in the presence of ATP and magnesium as a first step in ribose metabolism. [provided by RefSeq]
<b>Other Designations</b>	5230400M11Rik

## Publication Reference

- [Convergent evolution of similar enzymatic function on different protein folds: the hexokinase, ribokinase, and galactokinase families of sugar kinases.](#)

Bork P, Sander C, Valencia A.

Protein Science 1993 Jan; 2(1):31.

## Pathway

- [Pentose phosphate pathway](#)

## Disease

- [Tobacco Use Disorder](#)