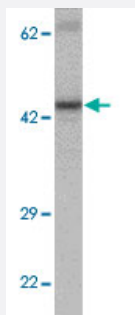


PRRT2 polyclonal antibody

Catalog # PAB27414

Size 100 ug

Applications



Western Blot (Tissue lysate)

Western blot analysis of PRRT2 in mouse brain tissue with PRRT2 polyclonal antibody (Cat # PAB27414) at 1 ug/mL.

Specification

Product Description	Rabbit polyclonal antibody raised against synthetic peptide of PRRT2.
Immunogen	A synthetic peptide corresponding to 18 amino acids at internal region of human PRRT2.
Host	Rabbit
Reactivity	Human, Mouse, Rat
Specificity	Multiple isoforms of PRRT2 are known to exist.
Form	Liquid
Purification	Peptide affinity purification
Concentration	1 mg/mL
Isotype	IgG
Recommend Usage	Western Blot (1 ug/mL) Immunohistochemistry (2.5 ug/mL) Immunofluorescence (20 ug/mL) The optimal working dilution should be determined by the end user.

Storage Buffer	In PBS (0.02% sodium azide)
Storage Instruction	Store at 4°C for three months. For long term storage store at -20°C. Aliquot to avoid repeated freezing and thawing.
Note	This product contains sodium azide: a POISONOUS AND HAZARDOUS SUBSTANCE which should be handled by trained staff only.

Applications

- Western Blot (Tissue lysate)

Western blot analysis of PRRT2 in mouse brain tissue with PRRT2 polyclonal antibody (Cat # PAB27414) at 1 ug/mL.

- Immunohistochemistry
- Immunofluorescence
- Enzyme-linked Immunoabsorbent Assay

Gene Info — PRRT2

Entrez GeneID	112476
Protein Accession#	NP_001243371
Gene Name	PRRT2
Gene Alias	DKFZp547J199, FLJ25513
Gene Description	proline-rich transmembrane protein 2
Gene Ontology	Hyperlink
Other Designations	-